

THE EXCLUSIVE

curry herefords

six mile creek hereford cattle co.

Volume 2

Fall Female Production Sale

SUNDAY, OCTOBER 18, 2020

5:00 p.m. at Six Mile Creek Ranch, El Reno, Oklahoma

AN EXCLUSIVE OFFERING OF HEREFORD SHOW HEIFER & DONOR PROSPECTS, PROVEN DONORS,
SPRING & FALL PAIRS, SPRING BRED HEIFERS, OPEN YEARLING HEIFERS & A SERVICE-AGE BULL



THE EXCLUSIVE *Volume 2*

curry herefords six mile creek hereford cattle co.

Sunday, October 18, 2020

5:00 p.m. at Six Mile Creek Ranch, El Reno, Oklahoma...Dinner served prior to the sale

Sale location: 9900 South Chiles Road, located 20 minutes southwest of the Express Ranches sale headquarters at Yukon

Stop by any time sale week to see the cattle—then make us your final stop on an exciting Oklahoma Hereford sale weekend!

BUCK CATTLE CO. FALL PREMIER SALE — 1 P.M., SATURDAY, OCTOBER 17, MADILL, OKLAHOMA

EXPRESS RANCHES HEREFORD EVENT — 12:30 P.M., SUNDAY, OCTOBER 18, YUKON, OKLAHOMA

The Exclusive sale offering will be available for viewing at the sale site the week prior to the sale.

Cattle will sell by video format and will be available for load out immediately following the sale.

HOTEL ACCOMMODATIONS

Hampton Inn, Yukon, OK — (405) 250-6400

Fairfield Inn, Yukon, OK — (405) 256-3866

Holiday Inn Express, Yukon, OK — (405) 494-7600

Home2 Suites by Hilton, Yukon, OK — (405) 265-0999

AIR TRAVEL

Will Rogers World Airport in Oklahoma City is served by most major airlines and is a 45 minute drive from the sale location. Rental cars are available, or we will be happy to meet your flight with advance notice.

ASSOCIATION REPRESENTATIVES

Joel Birdwell, President, American Hereford Association

Jack Ward, Executive Vice President, American Hereford Association

Shane Bedwell, Chief Operating Officer, American Hereford Association

Max Stotz, President, Oklahoma Hereford Association

Brooke Hinojosa-Sidwell, Executive Sec., Oklahoma Hereford Association

SALE STAFF

Dustin N. Layton, Auctioneer — (405) 464-2455

Colton Pratz, *Hereford World* — (405) 385-1054

Chisolm Kinder, *Oklahoma Cowman* — (405) 747-4683

Juston Stelzer, Stelzer Auction Services — (817) 992-7059

ONLINE BIDDING  Katie Colyer (208) 599-2962

Live internet bidding will be available to registered bidders on the LiveAuctions.tv site. Be sure to register two days prior to the sale.

SALE TERMS & CONDITIONS

TERMS: Cash or good check. Cattle will be sold to the highest bidder. The auctioneer shall settle any disputes as to bids. All cattle are to be paid for by the purchaser during or immediately following The Exclusive and will not be released until after settlement has been made. Each animal will be at the purchaser's risk immediately after it is sold.

HEALTH: The health of the cattle selling is excellent. Each animal will be accompanied by an individual health certificate for immediate interstate shipment.

GUARANTEE: Each animal will sell under the American Hereford Association's Recommended Terms of Sale for Auctions (www.hereford.org).

BREEDING GUARANTEE: All animals are guaranteed to be breeders with the exception of (a) calves under 12 months of age at time of purchase; (b) any female that is placed in an embryo transplant program and subjected to super-ovulation; or (c) gross negligence on the part of the buyer. Females sold as safe in calf have been examined by a competent veterinarian or have been guaranteed safe in calf through a blood test. Open females are guaranteed to be without calf. Any agreement with respect to embryo transfer production shall be a separate agreement between buyer and seller.

EXPECTED PROGENY DIFFERENCES (EPDs): EPDs are updated weekly by the American Hereford Association. The EPDs included were from the 9/21/20 evaluation of the AHA. The most current EPDs can be viewed online at www.hereford.org.

LIVESTOCK INSURANCE: Insurance for your purchases will be available sale day.

ANNOUNCEMENTS: Announcements made sale day from the auction block will take precedence over statements in the catalog or other advertising. We reserve the right to withdraw any sale lot not meeting our specifications prior to sale time.

LIABILITY: All persons who attend the sale do so at their own risk. Neither the owners, the sale managers nor any other persons connected with the sale assume liability, legal or otherwise, for accidents or loss of property. As the sale managers, Layton Auction Services, LLC and Schacher Auction Services have no responsibilities other than those involved in conducting the sale.



Mark Rubes (405) 640-0619
markrubes@visitingangelsook.com
Darrin Peters (254) 592-4316
sixmilecreekherefords.com



CURRY HEREFORDS

McAlester, Oklahoma
Curtis Curry (918) 521-4629
curtis.curry@american-national.com
Cameron Curry (918) 470-5221
Steven Curry (918) 623-6677
curryherefords.com

Sale co-managers:



Dustin N. Layton (405) 464-2455
laytond@yahoo.com
Andee Marston (785) 250-4449
laytonauction.com



Robert Schacher
(817) 219-0102
rob@schacherauction.com
schacherauction.com

Welcome to The Exclusive, Volume 2!

Welcome to Six Mile Creek Cattle Co. for the second addition of **THE EXCLUSIVE**. We are proud to once again have Curry Herefords as our partners in this event, as our programs are headed in the same direction.

My grandparents Ed and Pearl Rubes purchased the family farm on Six Mile Creek in 1949, and I am proud that my daughter, Kassidy, is the fourth generation of the Rubes family to work this land. As my grandfather believed, Hereford cattle are the best fit for this ranch, and we toil to improve this breed with predictable, sound and trouble-free genetics.

Since our last sale in 2018, we have added such genetics as Boyd Blueprint 6153, Denver Champion EXR Bankroll 8123 and Boyd Power Surge 9024. These herd sire additions combined with the always dependable American Classic are moving our herd in a progressive direction. In addition, we have expanded our embryo transplant program to exploit the genetics of our top cows. As you study the offering presented to you in this catalog, I think you will agree with the strides we are making.

We appreciate and value your interest in our program. Thank you for your interest in the second edition of **THE EXCLUSIVE**.

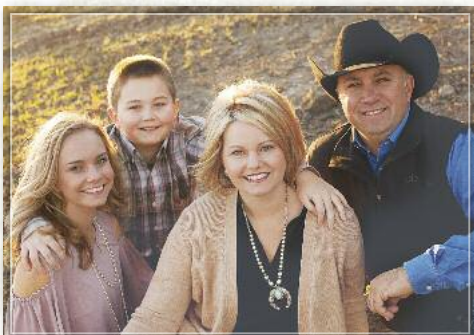
Mark Rubes



The Mark Rubes Family
Six Mile Creek Hereford Cattle Co.



The Curtis Curry Family
Curry Herefords



The Steven Curry Family
Curry Herefords

Dear Fellow Cattle Breeders and Show Families,

On behalf of Six Mile Creek and ourselves, we at Curry Herefords would like to welcome you to **THE EXCLUSIVE, VOLUME 2**. We were overwhelmed with the amount of support we had for our first sale and cannot wait to see what the future holds. We truly feel like we have a complete set of calves that can compete at any level.

At the Curry Hereford ranches, whether you are at Steven's house or my house, you will see that our goal is the same. For over 30 years we have studied the Hereford breed and tried to make adjustments to improve our herd. Our goal is to produce high quality show cattle that can compete in the ring and ultimately be functional, good uddered, productive cows. Also, we strive to meet the commercial needs by producing stout, rugged herd bulls that are good footed and have a balanced EPD profile.

Our family has seen more spotlight on a national scale in the last two years than ever before. We have been very blessed to have raised national champions on the female side as well as the bull side. We feel that we have made strides each and every year, and this set of cattle is a great example of that. From top to bottom, you will see functional cattle backed by great cows and standout herd bulls.

Over the past few months, we have put in countless hours behind the scenes, and I would like to thank everyone who has helped along the way. We have poured our heart into this business and this breed, and we want to share with you the best cattle we could possibly bring.

With that being said, the Rubes family and ourselves would like to invite you, your family and friends to join us Sunday, October 18th in El Reno, Oklahoma, for **THE EXCLUSIVE!**

Curtis Curry

LOTS 1-14:

SPRING OPEN SHOW HEIFER & DONOR PROSPECTS



lot 1

1

6MC ROCKIN 561 *Melissa* 031

3/2/20 • cow: P44155497 • TATTOO: LE 031 • Polled

ECR WHO MAKER 210 ET
T/R BPF AMERICANCLASSIC 561CET
TFR PARIS 415 ET

H H PERFECT TIMING 0150 ET
H GM 249 MELISSA MAY 4159
H KH DD MELISSA MAY 249 ET

DKF RO CASH FLOW 0245 ET (SOD)
RV GOLDEN LADY 5064
LAGRAND RELOAD 80P ET (SOD,CHB)
CRR D03 COTTON 356
CRR ABOUT TIME 743 (SOD)
HH MISS ADVANCE 6041S ET
AH JDH CRACKER JACK 26U ET (SOD)
GHC MISS JADE 79S

CED	BW	WW	YW	MILK	M&G	CW	REA	MARB	\$BMI	\$BII	\$CHB
-2.6	+4.0	+54	+81	+23	+50	+76	+58	-.03	+323	+382	+110

031 is the type of female that Six Mile Creek had in mind from the start. This American Classic daughter is sound from the ground up with plenty of bone, volume and rib. She combines all of this with a tremendous look, a beautiful front end and enough power to make her very competitive yet ultra-maternal when her show career is over. Her mother, 4159, has been in the donor program from day one and sells as Lot 16. She has one of the best, most consistent udders on the ranch and always brings in a high quality calf. Maternal sisters to Lot 1 sell as Lots 58A and 58B.

Top 10% REA. Top 15% CW.
Owned with Rockin' Shocker, Fort Worth, TX.
• Sells open.



H GM 249 MELISSA MAY 4159

Dam of Lot 1...sells as Lot 16



NOTE ON LOTS 1-14:

The owners of these heifers will reserve the right to one future successful flush at their expense and the buyer's convenience.

*Full sisters sell as
Lots 2a & 2b*



TCC BPF MS SHELBY Z03 ET
Donor dam of Lots 2A & 2B



2a **6MCT/R 561C Shelby 018 ET**

2/21/20 • cow: P44155477 • TATTOO: LE 018 • Polled

ECR WHO MAKER 210 ET
T/R BPF AMERICANCLASSIC 561CET
TFR PARIS 415 ET

NJW FHF 9710 TANK 45P (SOD)
TCC BPF MS SHELBY Z03 ET
TCC MISS SHELBY 82 ET

DKF RO CASH FLOW 0245 ET (SOD)
RV GOLDEN LADY 5064
LAGRAND RELOAD 80P ET (SOD,CHB)
CRR D03 COTTON 356

FHF 8403 STARBUCK 19H (SOD)
GV 579 VICTORIA 9710
ANKONIAN MIDAS 72
LCC TWO TIMIN 438 ET

Six Mile Creek	CED	BW	WW	YW	MILK	M&G	CW	REA	MARB	\$BMI	\$BII	\$CHB
	-8.2	+5.9	+56	+92	+28	+56	+79	+7.3	-.09	+230	+280	+124

Top 2% REA. Top 3% CHB. Top 10% CW.
• Sells open.

2b **6MCT/R 561C Shelby 013 ET**

2/20/20 • cow: P44155468 • TATTOO: LE 013 • Polled

ECR WHO MAKER 210 ET
T/R BPF AMERICANCLASSIC 561CET
TFR PARIS 415 ET

NJW FHF 9710 TANK 45P (SOD)
TCC BPF MS SHELBY Z03 ET
TCC MISS SHELBY 82 ET

DKF RO CASH FLOW 0245 ET (SOD)
RV GOLDEN LADY 5064
LAGRAND RELOAD 80P ET (SOD,CHB)
CRR D03 COTTON 356

FHF 8403 STARBUCK 19H (SOD)
GV 579 VICTORIA 9710
ANKONIAN MIDAS 72
LCC TWO TIMIN 438 ET

Six Mile Creek	CED	BW	WW	YW	MILK	M&G	CW	REA	MARB	\$BMI	\$BII	\$CHB
	-8.2	+5.9	+56	+92	+28	+56	+79	+7.3	-.09	+230	+280	+124

Top 2% REA. Top 3% CHB. Top 10% CW.
• Sells open.

Lots 2A and 2B have generated as much interest as any two females that Six Mile Creek has ever produced. Beginning with a Facebook post in July to several judging teams that have visited the ranch, these two are the talk. It is no coincidence that they have this incredibly cool look to them. Their dam, TCC BPF Shelby Z03 ET, started her career as the Reserve Bred-and-Owned Female in Denver in 2013 for the Tucker family and has gone on to be a feature donor for such noted programs as Sullivan Farms, Dunlap, IA, and Trent Ray, Stillwater, OK. As is Lot 1, they are sired by American Classic, who is leaving his mark as a sire that adds eye appeal and muscle.

SPRING SHOW HEIFER & DONOR PROSPECTS



Cameron & Bailey Curry
Curry Herefords



CH MS ADELIDA 853 ET
Donor dam of Lot 3



3 CH MS Eleanor 011 ET

3/12/20 • cow: P44162228 • TATTOO: BE 011 • Polled

TFR KU ROLL THE DICE 1326
CH HIGH ROLLER 756 ET
CH MAGIE 8023

C SPOT ON 6128 ET
CH MS ADELIDA 853 ET
CH MS RAINBEAU 411

STAR TCF LOCK-N-LOAD 300W ET
LH LANGFORD LADY 0253 ET
TFR HIGH COTTON 328 ET (SOD)
CH GOLDEN CAT 4016 1ET
CRR 5280
C 88X NOTICE ME 1311 ET
TH 22R 16S LAMBEAU 17Y
CH MS REBA 7016 ET

CH	CED	BW	WW	YW	MILK	M&G	CW	REA	MARB	\$BMI	\$BII	\$CHB
	-1.8	+3.7	+65	+101	+29	+61	+82	+7.3	-.07	+321	+387	+124

This dark red, goggle-eyed polled female is one that catches your eye from the first second you see her. She has a flashy, smooth front end and combines that with extra length of body. She is very balanced from end to end and stands on a great foot and leg structure. She has a deep rib shape and a strong hip. She is the kind we expect and are seeing from High Roller. Eleanor comes from a long line of Curry Hereford donors, including 7016 that you will see in many of their best pedigrees. Eleanor's mother won the Tulsa State Fair at eight months of age and had a very successful show career, including division champion twice at OYE. This heifer has as much potential to be a big time show prospect and future donor as any that we are offering.

Top 2% REA. Top 3% CHB. Top 4% CW. Top 10% WW, YW and M&G.

• Sells open.

4 CH CTJ Sandy 023 ET

2/28/20 • cow: 44162237 • TATTOO: BE 023 • Horned

CRR 719 CATAPULT 109 (SOD)
STCC SHR SNIPER 525 ET
SHOWTIME RAMSEY LOLA 122

BR DM CSF WALLACE ET
BR GABRIELLE 9011ET
BR GABRIELLE 5082

TH 122 71I VICTOR 719T (SOD)
CRR 4037 ECLIPSE 808
H EXCEL 8051 ET
RAMSEY'S GOLDEN LADY 8N
BR MOLER ET
RB L1 DOMINETTE 8063
BR LANSING 3060
BR GOLDRIEL 3029 ET

CH	CED	BW	WW	YW	MILK	M&G	CW	REA	MARB	\$BMI	\$BII	\$CHB
	+1.7	+3.9	+59	+94	+21	+51	+74	+5.4	+0.7	+249	+316	+114

Sandy is a big bellied, huge bodied female that exhibits extra length through her neck and front end. She has a big, thick top and is square hipped and set wide at the pins. She is very complete and sound structured. Sandy has donor in the blood, as her dam is a direct daughter of the famed Gabrielle 5082 from Barber Ranch, Channing, TX.

Top 15% REA and CHB.

• Sells open.

SPRING SHOW HEIFER & DONOR PROSPECTS



Matt, Stacy & Maddix Thomsen
Curry Herefords



5 CH CTJ *Addy* 022 ET

3/27/20 • cow: P44164755 • TATTOO: BE 022 • Polled

CRR 5280
C SPOT ON 6128 ET
C 88X NOTICE ME 1311 ET

PURPLE MB WOMANIZER 14U ET
CH MS ADALYN 5215 ET
CH MISS ALLISON 9121 ET

CRR 719 CATAPULT 109 (SOD)
CRR 435 KELLY 178 (DOD)
NJW 98S R117 RIBEYE 88X ET (SOD)
C NOTICE ME ET

CH ENUFF PROPHET 2913
MCR PPF MISS GOLD DOM 206 ET
BR MOLER ET
HH MISS ADVANCE 365N

CH	CED	BW	WW	YW	MILK	M&G	CW	REA	MARB	\$BMI	\$BII	\$CHB
	-2.8	+5.4	+67	+98	+28	+62	+84	+78	-.14	+305	+366	+123

This Spot On daughter exhibits big time potential. She is a long bodied, long fronted female that has a very refined and feminine look. She is strong topped and very square hipped with a sound and solid skeletal structure. You will also like the turn and shape to her rib that gives her that soft look of a cow that you can expect from the Spot On daughters.

Top 1% REA. Top Top 3% WW and CW. Top 10% M&G. Top 15% YW and CHB.

• Sells open.

6 CH MS *Raelynn* 016 ET

4/12/20 • cow: 44164694 • TATTOO: BE 016 • Horned

UPS SENSATION 2296 ET
KJ BJ 58Z CONTENDER D56 ET
MSU RACHAEL 58Z ET

CHURCHILL SENSATION 028X (SOD)
UPS JT MISS NEON 7811 1ET
FELTONS LEGEND 242 (SOD)
MSU TCF RACHAEL ET 54N

THM DURANGO 4037 (SOD)
CRR D03 CASSIE 206
BR MOLER ET
CH MISS OK GOLD 0053 (DOD)

CRR ABOUT TIME 743 (SOD)
CH JR RIZZY 0046 ET
CH MS REBA 7016 ET

CH	CED	BW	WW	YW	MILK	M&G	CW	REA	MARB	\$BMI	\$BII	\$CHB
	+3.9	+2.8	+59	+90	+30	+59	+79	+76	-.03	+283	+342	+118

Raelynn is a big stout hipped Contender daughter with huge rib shape and volume. She blends well from her shoulder into her rib cage and shows tremendous muscle over her top that carries deep into her quarter. With all of the depth, power and shape behind her shoulder, she still has a very maternal look up front. Raelynn is the ultimate cow prospect and the kind to make herd bulls.

Maternal sister sells as Lot 11.

Top 2% REA. Top 10% CW and CHB. Top 15% Milk and M&G.

• Sells open.

SPRING SHOW HEIFER & DONOR PROSPECTS



lot 7A



lot 7B



T/R BPF AMERICANCLASSIC 561CET

His daughters sell

7a 6MC 561C *Lady Cracker* 030

3/2/20 • cow: P44155493 • TATTOO: LE 030 • Polled

ECR WHO MAKER 210 ET
T/R BPF AMERICANCLASSIC 561CET
TFR PARIS 415 ET

AH JDH CRACKER JACK 26U ET (SOD)
H DELHAWK LADY CRACKER JACK 2528
CIRCLE-D 32P SARA 26S

CED	BW	WW	YW	MILK	M&G	CW	REA	MARB	\$BMI	\$BII	\$CHB
-2.4	+4.6	+52	+85	+23	+48	+72	+51	+11	+293	+357	+115

Natural calf out of donor Cracker Jack 2528.

Top 10% CHB.

• Sells open.

7b 6MC 561C *Lady Cracker* 017 ET

2/21/20 • cow: Reg. Pending • TATTOO: LE 017 • Polled

ECR WHO MAKER 210 ET
T/R BPF AMERICANCLASSIC 561CET
TFR PARIS 415 ET

AH JDH CRACKER JACK 26U ET (SOD)
H DELHAWK LADY CRACKER JACK 2528
CIRCLE-D 32P SARA 26S

CED	BW	WW	YW	MILK	M&G	CW	REA	MARB	\$BMI	\$BII	\$CHB
-3.5	+5.0	+53	+87	+23	+49	+72	+51	+10	+289	+354	+113

Top 15% CHB.

• Sells open.

The dam of Lots 7A and 7B, Cracker Jack 2528, was Cassidy's first show heifer and since has been a solid contributor to the Six Mile Creek program. These two young females match the target we aimed for with the addition of American Classic. They are thick ended with body, volume and bone, and they have the chiseled front end you want for look. Their balance, style and eye appeal combine with outstanding structural correctness. You can count on these females to be very competitive in the show ring and make the transition into great cows. A full sister sells as Lot 38 in the bred heifer division.

SPRING SHOW HEIFER & DONOR PROSPECTS



STAR SOPHISTICATION 256Z ET

Donor dam of Lot 9



8 6MC 109 *Lady Aster* 055 ET

5/9/20 • cow: P44178892 • TATTOO: LE 055 • Polled

TH 122 711 VICTOR 719T (SOD)
CRR 719 CATAPULT 109 (SOD)
 CRR 4037 ECLIPSE 808

WORR OWEN TANKERAY Y79D ET
BR ASTER F064 ET
 BR GABRIELLE 9124 ET

DRF JWR PRINCE VICTOR 711 (SOD)
 KBCR 19D DOMINETTE 122
 THM DURANGO 4037 (SOD)
 CRR 420 ECLIPSE 688

NJW FHF 9710 TANK 45P (SOD)
 BR KLD ROSE MARIE D79 ET
 DM BR SOONER (CHB)
 BR GABRIELLE 5082

CED	BW	WW	YW	MILK	M&G	CW	REA	MARB	\$BMI	\$BII	\$CHB
-1.7	+3.9	+61	+96	+31	+61	+73	+52	-.16	+303	+359	+111

055 is a young May heifer with a world of future. Very smooth and strong topped, long and level over her hip with plenty of volume and rib, she transitions well from rib to shoulder and from shoulder into her neck and front. Her pedigree has "cow" all over it, with Catapult, Tankeray and the famed Gabrielle 5082. 055 is an eye catcher with great hair!

Top 10% M&G. Top 15% WW.

- Sells open.

9 6MC 743 *Sophisticated* 016 ET

2/21/20 • cow: P44158111 • TATTOO: LE 016 • Polled

THM DURANGO 4037 (SOD)
CRR ABOUT TIME 743 (SOD)
 CRR D03 CASSIE 206

REMITALL ONLINE 122L (CHB,SOD)
STAR SOPHISTICATION 256Z ET
 MSU APOLLONIA 10M

CS BOOMER 29F (SOD)
 THM 7085 VICTRA 9036
 SHF INTERSTATE 20X D03 (SOD)
 CRR 475E CASSIE 838

REMITALL EMBRACER 8E (SOD)
 REMITALL CATALINA 24H
 SHF INTERSTATE 20X D03 (SOD)
 APOLLONIA OF BAR B 748

CED	BW	WW	YW	MILK	M&G	CW	REA	MARB	\$BMI	\$BII	\$CHB
+2.1	+3.0	+53	+84	+23	+50	+62	+33	-.05	+286	+342	+100

016 is a product of feature donor STAR Sophistication 256Z and the great show ring producer About Time. 016 is a dark cherry red with an abundance of rib and capacity. Her massive hip and rear leg blend well with a huge rib cage that flows to a smooth shoulder. 016 moves with authority from both ends and has an impressive stride. She is bred in the purple and projects to be a producer in the ring and the pasture.

Maternal sister sells as Lot 59.

- Sells open.

SPRING SHOW HEIFER & DONOR PROSPECTS



NOTE ON LOTS 1-14:

The owners of these heifers will reserve the right to one future successful flush at their expense and the buyer's convenience.



CH HIGH ROLLER 756 ET
Sire of Lots 3, 10 & 11



10 CH Ms Bella 010 ET

3/20/20 • cow: 44162227 • TATTOO: BE 010 • Horned

TFR KU ROLL THE DICE 1326
CH HIGH ROLLER 756 ET
CH MAGIE 8023

BR BELLE AIR 6011
EXR LEXUS 8128 ET
EXR LEXUS 4208 ET

STAR TCF LOCK-N-LOAD 300W ET
LH LANGFORD LADY 0253 ET
TFR HIGH COTTON 328 ET (SOD)
CH GOLDEN CAT 4016 1ET

BAR S LHF 028 240
BR BELLE 4082 ET
LSW WCC ABOUT TIME X06
TCC MISS LEXUS 84 ET

CH	CED	BW	WW	YW	MILK	M&G	CW	REA	MARB	\$BMI	\$BII	\$CHB
	-3.6	+5.5	+66	+107	+34	+67	+76	+64	+07	+317	+392	+123

Look at the front end, neck and shoulder on this one, and you can really see the future she has. She is short marked, red to the ground and goggle eyed. She is long bodied and smooth and stands on a great framework. This is what High Roller can do. Ms Bella has beauty and performance.

Top 2% M&G. Top 4% YW and CHB. Top 5% WW, Milk and REA. Top 15% CW.

• Sells open.

11 CH Ms High Rizzy 012 ET

4/2/20 • cow: 44162229 • TATTOO: BE 012 • Horned

TFR KU ROLL THE DICE 1326
CH HIGH ROLLER 756 ET
CH MAGIE 8023

CRR ABOUT TIME 743 (SOD)
CH JR RIZZY 0046 ET
CH MS REBA 7016 ET

STAR TCF LOCK-N-LOAD 300W ET
LH LANGFORD LADY 0253 ET
TFR HIGH COTTON 328 ET (SOD)
CH GOLDEN CAT 4016 1ET

THM DURANGO 4037 (SOD)
CRR D03 CASSIE 206
BR MOLER ET
CH MISS OK GOLD 0053 (DOD)

CH	CED	BW	WW	YW	MILK	M&G	CW	REA	MARB	\$BMI	\$BII	\$CHB
	-2.4	+4.3	+63	+100	+29	+60	+79	+71	-.12	+283	+341	+124

Rizzy has the length and design to grow into a great one. She is a High Roller out of one of our best About Time daughters, whose dam, 7016, is in the pedigree of most of our best.

Take a look at Rizzy's extra length through her neck and front as well as the length of her spine. Rizzy has a very smooth and elegant stride and a nice skeletal structure. Watch out for Rizzy as she develops over the next few months...she has a big future. Maternal sister sells as Lot 6.

Top 3% REA and CHB. Top 10% WW and CW. Top 15% YW and M&G.

• Sells open.

SPRING SHOW HEIFER & DONOR PROSPECTS

12 CH Ms Hope 008 ET

3/18/20 • cow: P44164696 • TATTOO: BE 008 • Polled

UPS SENSATION 2296 ET
H DEBERARD 7454 ET
 RST GAT NST Y79D LADY 54B ET

H/TSR/CHEZ/FULL THROTTLE ET (CHB)
CH FAITH 424 ET
 CH MS REBA 7016 ET

CHURCHILL SENSATION 028X (SOD)
 UPS JT MISS NEON 7811 1ET
 WORR OWEN TANKERAY Y79D ET
 H H LADY MAXIUM 111 ET
 H WCC/WB 668 WYARNO 9500 ET (SOD)
 R SWEET RED WINE 039
 BR MOLER ET
 CH MISS OK GOLD 0053 (DOD)

CED	BW	WW	YW	MILK	M&G	CW	REA	MARB	\$BMI	\$BII	\$CHB
-5.7	+6.1	+63	+104	+28	+59	+72	+72	-.06	+296	+359	+112

If you are looking for one that is bred for power, you need to look here. Hope's pedigree includes DeBerard, Full Throttle and Moler, and she shows it. She is set wide at the pins with exceptional muscle and stoutness. She is bold sprung with a very uniform body depth and balance. With all this power from the shoulders back, she still maintains a feminine, maternal look through her front. Hope has all the pieces to be an outstanding producer.

Top 2% REA. Top 10% WW and YW. Top 15% CHB.

- Sells open.



13 6MC 6112 809 Lady 026

2/29/20 • cow: P44155484 • TATTOO: LE 026 • Polled

DM BR SOONER (CHB)
ILR U201 SOONER 6112 ET
 KCF MISS PROFICIENT U201

GOLDEN OAK OUTCROSS 18U (SOD,CHB)
6MC 4006 CROSS MAN 809 ET
 H MS 5139 ADVANCE 4006 ET

REMITALL ONLINE 122L (CHB,SOD)
 DM L1 DOMINETTE 901
 EFBEEF SCHU-LAR PROFICIENT N093 (SOD)
 KCF MISS 774 L82
 GOLDEN-OAK FUSION 3S
 GOLDEN-OAK 60D MALLORY 15M
 NJW 98S R117 RIBEYE 88X ET (SOD)
 HH MISS ADVANCE 5139R ET

CED	BW	WW	YW	MILK	M&G	CW	REA	MARB	\$BMI	\$BII	\$CHB
+5.0	+1.7	+53	+83	+25	+51	+72	+61	+11	+430	+502	+112

026 is a smooth made female with a straight lined, strong top and a nice, level hip. She has a very balanced look from front to back and power in her quarter and hind leg. 026 is a long strided female that covers her tracks nicely. Her pedigree tells quite a story as well. Her sire is a Sooner daughter from the mother of X51, and on the bottom of her pedigree you will find 88X and the immortal Holden/Hoffman donor 5139R combined with Outcross. 026 projects to be a great cow with a perfect udder.

Top 10% REA, BMI and BII. Top 15% CHB.

Owned with Rockin' Shocker, Fort Worth, TX.

- Sells open.



14 6MC 2101 Lady Print 004

2/9/20 • cow: P44155429 • TATTOO: LE 004 • Polled

R LEADER 6964 (CHB)
BOYD 31Z BLUEPRINT 6153
 NJW 91H 100W RITA 31Z ET

CRR 4037 TEBOW 019
CRR 019 ECLIPSE 2101
 CRR T31 ECLIPSE 0103

HYALITE ON TARGET 936 (SOD)
 R MISS REVOLUTION 1009 (DOD)
 NJW 73S M326 TRUST 100W ET (SOD,CHB)
 REMITALL RITA 91H
 THM DURANGO 4037 (SOD)
 CRR P606 HONEY 536 ET
 GO L18 EXCEL T31
 CRR 9B ECLIPSE 402

CED	BW	WW	YW	MILK	M&G	CW	REA	MARB	\$BMI	\$BII	\$CHB
+8.8	+1.3	+52	+81	+29	+55	+68	+42	+12	+394	+465	+107

Our Blueprint daughters are some of the best females we have had at Six Mile Creek. They are smooth made performance females with rib, volume and muscle as well as great pigment and a solid look. Her dam, 2101, was one of the foundation cows for us from Coyote Ridge.

Top 10% CED.

- Sells open.



BOYD 31Z BLUEPRINT 6153
 His daughters and AI service sell

LOTS 15-17:
PROVEN DONOR DAMS



15 **CRR 435 Kelly 166** {DOD,DLF,HYF,IEF}

3/3/11 • cow: P43186452 • TATTOO: BE 166 • Polled

REMITALL ONLINE 122L {CHB,SOD}
DM BR SOONER {CHB}
DM L1 DOMINETTE 901

REMITALL EMBRACER 8E {SOD}
REMITALL CATALINA 24H
HH ADVANCE 688F 1ET
DM L1 DOMINETTE P640

SHF INTERSTATE 20X D03 {SOD}
CRR D03 KELLY 361
CRR 353 KELLY 923 {DOD}

REMITALL KEYNOTE 20X {SOD,CHB}
DR MISS D45 V100 {DOD}
CRR 236Z STANDOUT 353 {SOD}
CRR 835X KELLY 625 ET

Six Mile Creek	CED	BW	WW	YW	MILK	M&G	CW	REA	MARB	\$BMI	\$BII	\$CHB
	-0.5	+4.7	+50	+79	+30	+55	+65	+31	+08	+313	+377	+102

The Kelly cow family from Coyote Ridge Ranch is one of the tops in the Hereford business. 166 is a full sister to CRR 435 Kelly 178, the dam of CRR 5280, who the lead bull in Coyote Ridge Ranch's 2015 National Western Stock Show Champion Pen of Three bulls. A Catapult daughter (full blood sister to 5280) is one of the feature donors still in production at Coyote Ridge.

166 is made as the modern Hereford should be. She has a tremendous amount of muscle and bone and a huge, deep body with an unbelievable rib shape and design. She has a flawless structure with clean joints, soft pasterns and a smooth angle to her shoulder. 166 has an excellent flush record, producing 33 embryos in three flushes since joining the Six Mile Creek donor battery.

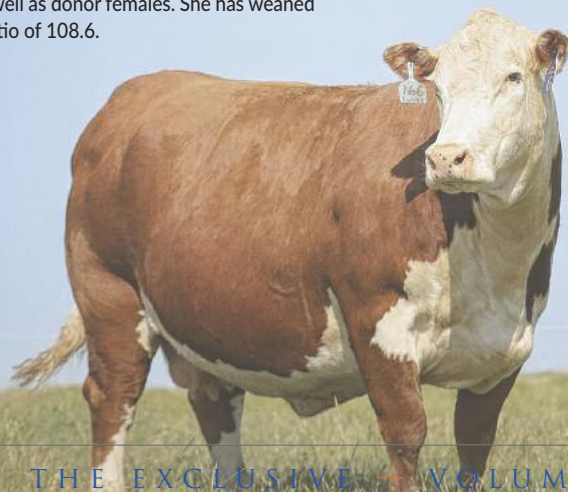
If you are looking for a cow to build a herd around, 166 would be a great place to start. She is the kind to produce herd bulls as well as donor females. She has weaned five natural calves with an average weaning ratio of 108.6.

- Sells open and ready to flush.



CRR 5280

Dam is a full sister to Lot 15



PROVEN DONORS



16 H GM 249 Melissa May 4159 {DLF,HYF,IEF,MSUDF}
2/8/14 • cow: P43493362 • TATTOO: BE 4159 • Polled

CRR ABOUT TIME 743 (SOD)
H H PERFECT TIMING 0150 ET
HH MISS ADVANCE 6041S ET

AH JDH CRACKER JACK 26U ET (SOD)
H KH DD MELISSA MAY 249 ET
GHC MISS JADE 79S

THM DURANGO 4037 (SOD)
CRR D03 CASSIE 206
HH ADVANCE 3196N (SOD)
HH MISS ADVANCE 2111 M

NJW 1Y WRANGLER 19D (SOD)
CRR D03 VIOLET 349
HF 4L BEYOND 36N (SOD)
GHC MISS CARLA 151K

CED	BW	WW	YW	MILK	M&G	CW	REA	MARB	\$BMI	\$BII	\$CHB
+0.5	+2.7	+51	+70	+19	+45	+68	+40	-02	+388	+451	+90

4159 is the dam of the Lot 1 heifer in this sale, and she has been a very consistent producer for us. 4159 is a moderate framed, super functional cow that has one of the best looking udders on the ranch. Gleaned from Hoffman Ranch, 4159 provides the look and extra deep body with a good, strong hip and hind leg structure. Here is a donor to build on. She will give you look, style and performance in a very efficient package.

Daughters sell as Lots 1, 58A and 58B.

Owened with Rockin' Shocker, Fort Worth, TX.

- AI 4/22/20 to CH High Roller 756 ET. Checked safe to AI date.
Pasture exposed 4/25/20 to 7/3/20 to T/R BPF AmericanClassic 561CET.



6MC ROCKIN 561 MELISSA 031
Daughter of Lot 16...sells as Lot 1

17 GCC Ladysport Trust Me ET {DLF,HYF,IEF,MSUDF}
4/5/14 • cow: P43509801 • TATTOO: LE B30 • Hom. Polled

KCF BENNETT 3008 M326 (SOD)
NJW 73S M326 TRUST 100W ET (SOD,CHB)
NJW P606 72N DAYDREAM 73S

RU 20X BOULDER 57G (SOD)
NJW BW LADYSPORT DEW 78P ET
SADDLE VLY LADYSPORT 120

RRH MR FELT 3008 (CHB,SOD)
KCF MISS 459 F284
PW VICTOR BOOMER P606 (SOD)
NJW 94J DEW 72N

REMITALL KEYNOTE 20X (SOD,CHB)
RU 10A DEW 57D
RU DUSTER 60D (CHB)
GK LADYSPORT 131A

CED	BW	WW	YW	MILK	M&G	CW	REA	MARB	\$BMI	\$BII	\$CHB
+2.6	+3.2	+56	+99	+31	+59	+76	+68	+02	+405	+470	+134

GCC Ladysport Trust Me ET (B30) was our pick at the 2015 Cowtown Classic in Fort Worth from Grubbs Cattle Co. She is a direct daughter of NJW BW Ladysport Dew 78P ET, the \$90,000 donor who has 122 progeny on record and has been one of the most solid producers in the Hereford breed, including TwentyTwelve and Cowboss. B30 produced Lots 1A and 1B in the first Exclusive Sale that sold to Gary and Kathy Buchholz, GKB Ranch, Waxahachie, TX.

B30 is a cow built firmly from the ground up. She stands on solid bone structure and a big foot. She has excellent dimension with perfect length and depth in proportion. She has depth through her rib and carries that depth well into her flank. Here is an opportunity to own a direct daughter of one of the most famed cows of the Hereford breed. Daughters sell as Lots 56A and 56B.

Top 1% CHB. Top 3% REA. Top 10% YW, Milk, M&G and CW.

- Sells open and ready to flush.

17a 6MC 561C Ladysport 054
5/8/20 • cow: P44155549 • TATTOO: LE 054 • Polled

ECR WHO MAKER 210 ET
T/R BPF AMERICANCLASSIC 561CET
TFR PARIS 415 ET

NJW 73S M326 TRUST 100W ET (SOD,CHB)
GCC LADYSPORT TRUST ME ET
NJW BW LADYSPORT DEW 78P ET

DKF RO CASH FLOW 0245 ET (SOD)
RV GOLDEN LADY 5064
LAGRAND RELOAD 80P ET (SOD,CHB)
CRR D03 COTTON 356

KCF BENNETT 3008 M326 (SOD)
NJW P606 72N DAYDREAM 73S
RU 20X BOULDER 57G (SOD)
SADDLE VLY LADYSPORT 120

CED	BW	WW	YW	MILK	M&G	CW	REA	MARB	\$BMI	\$BII	\$CHB
+0.2	+3.4	+54	+92	+29	+56	+80	+71	+01	+326	+385	+125

This young May heifer is sired by American Classic, who is proving himself as one of the top producers of high quality cattle with the right look. She is a daughter of our B30 donor and granddaughter of Ladysport Dew 78P. 054 is a future donor in the making.

Top 3% REA and CHB. Top 10% CW.

- Sells open.



NJW BW LADYSPORT DEW 78P ET
Famous donor dam of Lot 17 & maternal granddam of Lot 17A



**LOTS 18-28:
SPRING HEIFER CALF
PAIRS & SPLITS**



H CATTLE KATE 8045 ET
Donor dam of Lot 18



18 WPF 8045 18U Kathy 3208 ET

4/2/13 • cow: P43402789 • TATTOO: BE 3208 • Polled

GOLDEN-OAK FUSION 3S
GOLDEN OAK OUTCROSS 18U [SOD,CHB]
GOLDEN-OAK 60D MALLORY 15M

GO EXCEL L18 [SOD]
H CATTLE KATE 8045 ET
H LADY GOLD 323

GOLDEN-OAK 4J MAXIUM 28M [CHB,SOD]
NCX MISS JR NELLIE 528N
RU DUSTER 60D [CHB]
GOLDEN-OAK P183 GLORIA 25G
DD EXCEL DESIGN 40 [SOD]
GO MS 124 ADVANCE 7005
C-S PURE GOLD 98170 [CHB,SOD]
RCR DOMINET 97032

CED	BW	WW	YW	MILK	M&G	CW	REA	MARB	\$BMI	\$BII	\$CHB
+1.6	+4.9	+61	+101	+30	+60	+77	+53	.00	+350	+420	+109

3208 is exactly what you would expect from this mating of Outcross and Cattle Kate. She has a perfect udder with plenty of milk flow. She has a wonderful profile, is very eye appealing and well balanced, and she has the dark red color with great markings and pigment. She has a long stride and moves very soundly. As you can see from her heifer calf, she can be a big time producer.

Top 5% CW. Top 10% WW, YW and M&G. Top 15% Milk, REA and CHB.

- AI 4/22/20 to CH High Roller 756 ET. Checked safe to AI date.
- Pasture exposed 4/25/20 to 7/3/20 to EXR Bankroll 8130 ET.

18a 6MC 3208 561C Classic Lady 009

2/14/20 • cow: P44155455 • TATTOO: LE 009 • Polled

ECR WHO MAKER 210 ET
T/R BPF AMERICANCLASSIC 561CET
TFR PARIS 415 ET

GOLDEN OAK OUTCROSS 18U [SOD,CHB]
WPF 8045 18U KATHY 3208 ET
H CATTLE KATE 8045 ET

DKF RO CASH FLOW 0245 ET [SOD]
RV GOLDEN LADY 5064
LAGRAND RELOAD 80P ET [SOD,CHB]
CRR D03 COTTON 356

GOLDEN-OAK FUSION 3S
GOLDEN-OAK 60D MALLORY 15M
GO EXCEL L18 [SOD]
H LADY GOLD 323

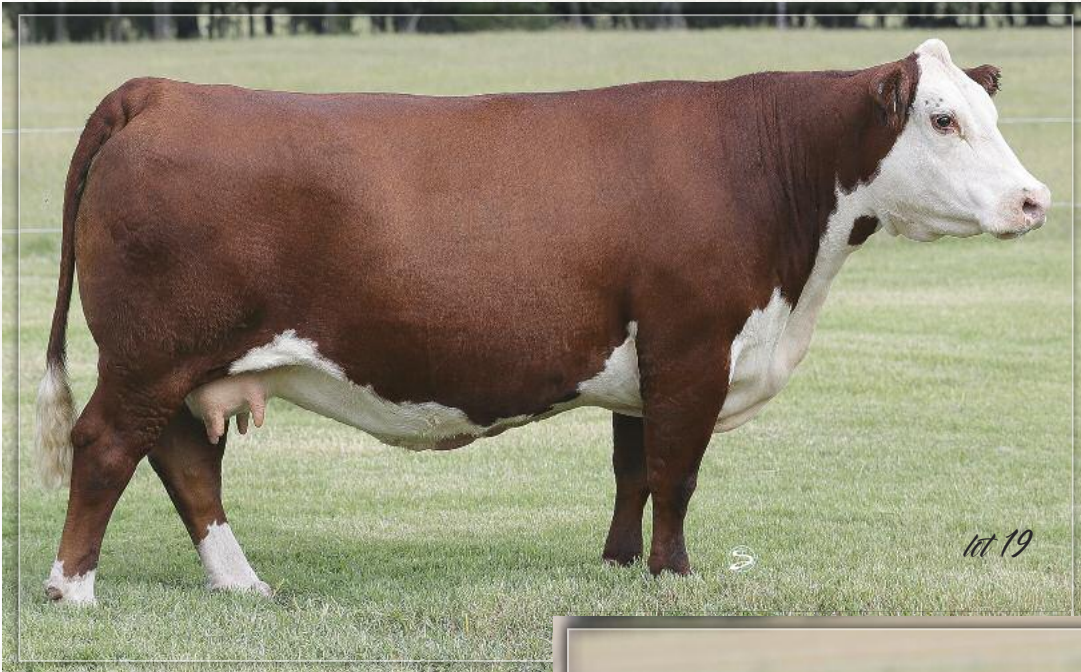
CED	BW	WW	YW	MILK	M&G	CW	REA	MARB	\$BMI	\$BII	\$CHB
-1.5	+4.8	+58	+95	+29	+58	+80	+64	-.01	+304	+366	+118

009 is quite a compliment to her mother. This American Classic daughter is easily one of our top show heifer prospects, and from her mother, you can tell that she will be one of your front pasture cows that will be a top producer. 009 is a very well built female that is powerful through her hip and hind end. She is level topped, and her tail-head is set in perfectly. You have to love the uniform body depth that she maintains from shoulder to flank. She is very stylish over the top of her shoulder and ties it well with her very feminine front. This is the kind with muscle, look and balance!

Top 5% REA. Top 10% CW and CHB.

- Sells open.

SPRING HEIFER CALF PAIR



19

TDP Heidi Z423 {DLF,HYF,IEF}

3/26/12 • cow: P43292946 • TATTOO: BE Z423 • Polled

FELTONS LEGEND 242 (SOD)
MSU TCF REVOLUTION 4R (SOD,CHB)
 MSU TCF RACHAEL ET 54N

PW VICTOR BOOMER P606 (SOD)
ASH HEIDI 39R ET
 BLAIR-ATHOL 20X HEIDI 26J

FELTONS DOMINO 774 (SOD)
 FELTONS G15
 REMITALL ONLINE 122L (CHB,SOD)
 HH MISS ADV 786G 1ET

REMITALL BOOMER 46B (CHB,SOD)
 PW VICTORIA 964 8114
 REMITALL KEYNOTE 20X (SOD,CHB)
 MHR 35A HAZEL 54A 18D

CED	BW	WW	YW	MILK	M&G	CW	REA	MARB	\$BMI	\$BII	\$CHB
-2.9	+4.2	+57	+94	+26	+55	+74	+88	+10	+379	+450	+114

Z423 has a pedigree that works as well as any in this breed—Revolution over P606. They make top performing cows with sound, level udders. Z423 is a big volume, deep ribbed cow that is dark red and big hipped. Sound, predictable genetics wrapped up in a stout made package.

Top 1% REA. Top 15% CHB.

Owned with Rockin' Shocker, Fort Worth, TX.

- Sells open.

19a

6MC ROCKIN 561C Heidi 040

3/13/20 • cow: P44155529 • TATTOO: LE 040 • Polled

ECR WHO MAKER 210 ET
T/R BPF AMERICANCLASSIC 561CET
 TFR PARIS 415 ET

MSU TCF REVOLUTION 4R (SOD,CHB)
TDP HEIDI Z423
 ASH HEIDI 39R ET

DKF RO CASH FLOW 0245 ET (SOD)
 RV GOLDEN LADY 5064
 LAGRAND RELOAD 80P ET (SOD,CHB)
 CRR D03 COTTON 356

FELTONS LEGEND 242 (SOD)
 MSU TCF RACHAEL ET 54N
 PW VICTOR BOOMER P606 (SOD)
 BLAIR-ATHOL 20X HEIDI 26J

CED	BW	WW	YW	MILK	M&G	CW	REA	MARB	\$BMI	\$BII	\$CHB
-6.2	+5.7	+59	+98	+27	+57	+79	+82	+01	+317	+382	+121

040 is another American Classic that has the chiseled front end and excellent profile. Like her mother, she is a dark cherry red that goes all the way to the ground. She has exceptional length over her top and out through the hip. Nice structure and bone mass in this prospect.

Top 1% REA. Top 5% CHB. Top 10% CW. Top 15% YW.

Owned with Rockin' Shocker, Fort Worth, TX.

- Sells open.

SPRING HEIFER CALF PAIRS & SPLITS



20 *ETF Roxette* 88X B19 5091 ET

9/21/15 • cow: 43680089 • TATTOO: LE 5091 • Horned

SHF RIB EYE M326 R117 (SOD)
NJW 98S R117 RIBEYE 88X ET (SOD)
 NJW 9126J DEW DOMINO 98S (DOD)

BR CURRENCY 8144 ET
GKB 8144 NOTICE ME TOO B19 ET
 C NOTICE ME TOO ET

KCF BENNETT 3008 M326 (SOD)
 HVH MISS HUDSON 83K 8M
 CL 1 DOMINO 9126J 1ET (SOD,CHB)
 NJW 57G 74G DEW 5M
 DM BR SOONER (CHB)
 BR GABRIELLE 5082
 DM BR L1 DOMINO 146 (SOD)
 C NOTICE ME ET

Six	CED	BW	WW	YW	MILK	M&G	CW	REA	MARB	\$BMI	\$BII	\$CHB
	+7.4	+1.0	+52	+76	+27	+53	+62	+4.4	+1.9	+483	+562	+100

Here is a chance to own a donor right from the Colyer, GKB and Bar 1 programs. This 88X daughter is out of the famed Notice Me line and is a direct daughter of GKB Notice Me Too B19 ET. She ranks in the top 1% of the breed for Sustained Cow Fertility.

Top 1% BMI and BII. Top 10% CED. Top 15% BW.

- AI 4/22/20 to NJW 135U 10Y Hometown 27A. Pasture exposed 4/25/20 to 7/3/20 to EXR Bankroll 8130 ET. Checked safe to pasture exposure.

20a *6MC 5091 27A Town Lady* 003

2/9/20 • cow: P44156669 • TATTOO: LE 003 • Polled

NJW 73S W18 HOMETOWN 10Y ET (SOD,CHB,MDC) SHF WONDER M326 W18 ET (CHB,SOD,MDC)
NJW 135U 10Y HOMETOWN 27A (MDC) NJW P606 72N DAYDREAM 73S
 NJW 4037 34S DURANGO VACA 135U (DOD) THM DURANGO 4037 (SOD)
 NJW P606 80L DAYDREAM 34S ET

NJW 98S R117 RIBEYE 88X ET (SOD)
ETF ROXXETTE 88X B19 5091 ET
 GKB 8144 NOTICE ME TOO B19 ET

SHF RIB EYE M326 R117 (SOD)
 NJW 9126J DEW DOMINO 98S (DOD)
 BR CURRENCY 8144 ET
 C NOTICE ME TOO ET

Six	CED	BW	WW	YW	MILK	M&G	CW	REA	MARB	\$BMI	\$BII	\$CHB
	+6.3	+1.3	+56	+82	+26	+54	+65	+4.7	+0.9	+451	+527	+96

Take a look at this huge bodied, square hipped brood cow in the making. Dark colored and short marked, she is big middled with a giant rib cage, lots of volume and depth. She shows a big expression of muscle in her top and rear end. This female's pedigree has "donor" written all over it. Top 3% BMI. Top 4% BII.

- Sells open.

21 *CH Ms Sensation* 773 ET

12/1/17 • cow: 43911519 • TATTOO: BE 773 • Horned

UPS DOMINO 3027 (SOD)
CHURCHILL SENSATION 028X (SOD)
 CHURCHILL LADY 7202T ET

CL 1 DOMINO 9126J 1ET (SOD,CHB)
 UPS MISS DIAMOND 1353
 GH RAMBO 279R (CHB,SOD)
 CL 1 DOMINETTE 301N

C COWBOY 7022 ET
CH MADDI 0030
 CH MAGIE 8023

CJH COWBOY 512
 C NOTICE ME ET
 TFR HIGH COTTON 328 ET (SOD)
 CH GOLDEN CAT 4016 1ET

CH	CED	BW	WW	YW	MILK	M&G	CW	REA	MARB	\$BMI	\$BII	\$CHB
	+5.6	+1.0	+48	+75	+41	+65	+62	+5.2	+1.0	+466	+534	+104

773 is a well made Sensation daughter with a perfect angle to her shoulder and a beautiful head and neck. She has a nice, clean jointed structure and a long, smooth stride. Her dam is a maternal sister to High Roller.

Top 1% Milk. Top 2% M&G, BMI and BII.

- Sells open.

21a *CH Ms Classy* 050

2/15/20 • cow: 44161395 • TATTOO: 050 • Horned

C SPOT ON 6128 ET
CH CLASSIFIED 850 ET
 CH MS RAINBEAU 411

CRR 5280
 C 88X NOTICE ME 1311 ET
 TH 22R 16S LAMBEAU 17Y
 CH MS REBA 7016 ET

CHURCHILL SENSATION 028X (SOD)
CH MS SENSATION 773 ET
 CH MADDI 0030

UPS DOMINO 3027 (SOD)
 CHURCHILL LADY 7202T ET
 C COWBOY 7022 ET
 CH MAGIE 8023

CH	CED	BW	WW	YW	MILK	M&G	CW	REA	MARB	\$BMI	\$BII	\$CHB
	+5.4	+0.9	+52	+82	+33	+60	+70	+6.3	+0.2	+406	+469	+110

Classy's pedigree is loaded with the elite of the Hereford breed. 5280, Notice Me, Rainbeau (pictured), Sensation 028X and our donor 8023 (High Roller's dam) are all included. Like her mother, 050 is well structured and clean in her joints. Dark red and good pigment.

Top 10% Milk and REA. Top 15% BW and M&G.

- Sells open.



CH MS RAINBEAU 411

Paternal granddam of Lots 21A & 22A;
 donor dam of Lot 22

SPRING HEIFER CALF PAIRS & SPLITS



22 CH *Ms Elvira* 854 ET
2/6/18 • cow: P43935253 • TATTOO: BE 854 • Polled

23 6MC *Trust Lady* 608 ET
3/5/16 • cow: P43812424 • TATTOO: LE 608 • Polled

CRR 5280
C SPOT ON 6128 ET
C 88X NOTICE ME 1311 ET

TH 22R 16S LAMBEAU 17Y
CH MS RAINBEAU 411
CH MS REBA 7016 ET

CRR 719 CATAPULT 109 (SOD)
CRR 435 KELLY 178 (DOD)
NJW 98S R117 RIBEYE 88X ET (SOD)
C NOTICE ME ET

TH 121L 63N TUNDRA 16S
TH 62N 3L KELSEY 22R
BR MOLER ET
CH MISS OK GOLD 0053 (DOD)

KCF BENNETT 3008 M326 (SOD)
NJW 73S M326 TRUST 100W ET (SOD,CHB)
NJW P606 72N DAYDREAM 73S

MSU TCF REVOLUTION 4R (SOD,CHB)
GRASSY RUN ANCHOR 108Y
ANCHOR 33L

RRH MR FELT 3008 (CHB,SOD)
KCF MISS 459 F284
PW VICTOR BOOMER P606 (SOD)
NJW 94J DEW 72N

FELTONS LEGEND 242 (SOD)
MSU TCF RACHAEL ET 54N
ANCHOR BRAXTON (SOD)
ANCHOR 40E 69H

CH	CED	BW	WW	YW	MILK	M&G	CW	REA	MARB	\$BMI	\$BII	\$CHB
	+2.2	+3.3	+63	+99	+26	+58	+78	+7.4	-.08	+306	+368	+119

Six Mile Creek	CED	BW	WW	YW	MILK	M&G	CW	REA	MARB	\$BMI	\$BII	\$CHB
	+1.7	+3.1	+59	+100	+30	+59	+76	+7.1	+1.4	+405	+481	+125

This Spot On two-year-old has a nice, tight udder and perfect teat suspension. She is a flush sister to our herd sire CH Spot On 860 ET, whose pasture service sells. Their dam is our Lambeau donor, Rainbeau, who is a direct daughter of 7016. Deep sided and bold sprung, this young cow is the type that can wind up in the donor pen. A maternal sister sells as Lot 48.

608 comes from one of the first donors at Six Mile Creek, Grassy Run Anchor 108Y, a Revolution out of an Anchor Braxton daughter. The Braxton females are superb mothers with solid milk flow and nice udders. You will love 608 for her size, power and balance—what we love about the Trust females.

Top 4% CW and CHB. Top 5% WW. Top 10% YW and M&G.
• AI 4/20/20 CH High Roller 756 ET. Checked safe to AI date.
PE 4/25/20 to 8/15/20 to GKB 9279 Extra Deep 200C.

Top 2% REA and CHB. Top 10% YW, M&G, CW, BMI and BII. Top 15% WW and Milk.
• Pasture exposed 4/25/20 to 7/3/20 to EXR Bankroll 8130 ET. Checked safe.

22a CH *Ms Belle* 055
2/25/20 • cow: P44161406 • TATTOO: BE 055 • Polled

23a 6MC 608 *Classic Lady* 052
4/15/20 • cow: P44155547 • TATTOO: LE 052 • Polled

BR BELLE AIR 6011
C CJC BELLE HEIR ET
C CJC 89T MISS MILES 4264 ET

C SPOT ON 6128 ET
CH MS ELVIRA 854 ET
CH MS RAINBEAU 411

BAR S LHF 028 240
BR BELLE 4082 ET
C MILES MCKEE 2103 ET
TH 16G 20N GEMINI 89T

CRR 5280
C 88X NOTICE ME 1311 ET
TH 22R 16S LAMBEAU 17Y
CH MS REBA 7016 ET

ECR WHO MAKER 210 ET
T/R BPF AMERICANCLASSIC 561CET
TFR PARIS 415 ET

NJW 73S M326 TRUST 100W ET (SOD,CHB)
6MC TRUST LADY 608 ET
GRASSY RUN ANCHOR 108Y

DKF RO CASH FLOW 0245 ET (SOD)
RV GOLDEN LADY 5064
LAGRAND RELOAD 80P ET (SOD,CHB)
CRR D03 COTTON 356

KCF BENNETT 3008 M326 (SOD)
NJW P606 72N DAYDREAM 73S
MSU TCF REVOLUTION 4R (SOD,CHB)
ANCHOR 33L

CH	CED	BW	WW	YW	MILK	M&G	CW	REA	MARB	\$BMI	\$BII	\$CHB
	+3.4	+2.7	+61	+98	+32	+62	+77	+6.7	+1.3	+385	+463	+124

Six Mile Creek	CED	BW	WW	YW	MILK	M&G	CW	REA	MARB	\$BMI	\$BII	\$CHB
	-3.4	+4.8	+59	+99	+29	+58	+80	+7.3	+0.4	+326	+393	+123

Ms Belle is a daughter of our new Colyer herd sire that is a son of the 2019 Denver Supreme Champion Belle Air. Ms Belle is a well-marked, refined female with extra extension through her body.

Again, we cannot stress enough what the addition of American Classic has done for our program. He adds a load of style and look to his calves, and that is the case with this young April heifer.

Top 3% CHB. Top 4% REA. Top 10% Milk, M&G and CW. Top 15% WW and YW.
• Sells open.

Top 2% REA. Top 4% CHB. Top 10% CW.
• Sells open.



CH CLASSIFIED 850 ET
Sire of Lot 21A & full brother to Lot 22



Live internet bidding will be available to registered bidders on the LiveAuctions.tv site. Be sure to register two days prior to the sale.

For assistance, contact:
Katie Colyer • (208) 599-2962

SPRING HEIFER CALF PAIRS & SPLITS



24 WPF 5135 409X *Shea* 4098 ET

1/28/14 • cow: P43493714 • TATTOO: BE 4098 • Polled

DRF JWR PRINCE VICTOR 71I (SOD)
TH 223 71I CONQUER 409X ET
 KBCR 19D DOMINETTE 223

HRP THM VICTOR 109W 9329 (SOD)
 RHF 964 VICTRA 4057
 NJW 1Y WRANGLER 19D (SOD)
 KBCR 631 DOMINETTE 066

CT NEWSLINE 99N (SOD)
RV STARLINE 5136
 RV DYNASTY 1136 (DOD)

REMITALL ONLINE 122L (CHB,SOD)
 CT MISS ALPHA 706 (DOD)
 HA EMPEROR
 RV STARLITE 9136

SIX	CED	BW	WW	YW	MILK	M&G	CW	REA	MARB	\$BMI	\$BII	\$CHB
MLC	-1.1	+5.0	+56	+99	+20	+48	+61	+4.7	-0.2	+312	+375	+93

This Conquer daughter is a sight to see. She is a big footed, heavy boned female that sports a huge hip and top as well as a giant rib cage with capacity to spare. This unique pedigree is a great way to get some fresh genetics in your herd. Be sure to find 4098 at the sale. We think you will be impressed with her and her udder.

- AI 4/22/20 to H Bell Ringer 8459 ET.
 Pasture exposed 4/25/20 to 7/3/20 to EXR Bankroll 8130 ET.
 Checked safe in calf, too close to call. DNA test to determine sire.

24a 6MC 813 *Shea* 043

3/14/20 • cow: Reg. Pending • TATTOO: 043 • Horned

NJW 79Z 22Z HEAVY DUTY 72C ET
6MC 1237 HEAVY MAN 813
 H RW LADY REDEEM 1237 ET

NJW 67U 28M BIG MAX 22Z
 BW 91H 100W RITA 79Z ET
 KJ HVH 33N REDEEM 485T ET (SOD)
 JSF 12N LADY VAL 9T

TH 223 71I CONQUER 409X ET
WPF 5135 409X SHEA 4098 ET
 RV STARLINE 5136

DRF JWR PRINCE VICTOR 71I (SOD)
 KBCR 19D DOMINETTE 223
 CT NEWSLINE 99N (SOD)
 RV DYNASTY 1136 (DOD)

SIX	CED	BW	WW	YW	MILK	M&G	CW	REA	MARB	\$BMI	\$BII	\$CHB
MLC	0.0	+4.1	+58	+100	+24	+53	+64	+4.5	-0.3	+336	+402	+96

043 is molded in the image of her mother with a sound, functional framework and expression of muscle. Take a look for her to make the next step to the donor pen in the future.

- Top 15% YW.
- Sells open.

25 6MC *Trust* Lady 612 ET

3/9/16 • cow: P43698558 • TATTOO: LE 612 • Polled

KCF BENNETT 3008 M326 (SOD)
NJW 73S M326 TRUST 100W ET (SOD,CHB)
 NJW P606 72N DAYDREAM 73S

RRH MR FELT 3008 (CHB,SOD)
 KCF MISS 459 F284
 PW VICTOR BOOMER P606 (SOD)
 NJW 94J DEW 72N

MSU TCF REVOLUTION 4R (SOD,CHB)
SSF 163P MS REVOLUTION 071
 JWR 4088 PRINCESS 163P

FELTONS LEGEND 242 (SOD)
 MSU TCF RACHAEL ET 54N
 PW VICTOR BOOMER P606 (SOD)
 HRP VICTORIA 103T 4088

SIX	CED	BW	WW	YW	MILK	M&G	CW	REA	MARB	\$BMI	\$BII	\$CHB
MLC	-0.6	+3.7	+60	+99	+32	+62	+76	+7.6	+1.2	+427	+503	+124

This Trust daughter is out of one of our first donors that we purchased, J071. This pedigree has worked for us time and again with Trust over a Revolution/P606. One of the favorites in her calf crop, 612 has always been one to stand out. She is stout made and structured well.

- Top 1% REA. Top 2% CHB. Top 4% M&G, BMI and BII. Top 10% WW, YW, Milk and CW.
- Sells open.

25a 6MC 813 *Heavy* Lady 039

3/13/20 • cow: Reg. Pending • TATTOO: 039 • Horned

NJW 79Z 22Z HEAVY DUTY 72C ET
6MC 1237 HEAVY MAN 813
 H RW LADY REDEEM 1237 ET

NJW 67U 28M BIG MAX 22Z
 BW 91H 100W RITA 79Z ET
 KJ HVH 33N REDEEM 485T ET (SOD)
 JSF 12N LADY VAL 9T

NJW 73S M326 TRUST 100W ET (SOD,CHB)
6MC TRUST LADY 612 ET
 SSF 163P MS REVOLUTION 071

KCF BENNETT 3008 M326 (SOD)
 NJW P606 72N DAYDREAM 73S
 MSU TCF REVOLUTION 4R (SOD,CHB)
 JWR 4088 PRINCESS 163P

SIX	CED	BW	WW	YW	MILK	M&G	CW	REA	MARB	\$BMI	\$BII	\$CHB
MLC	+0.3	+3.5	+60	+100	+30	+60	+72	+6.0	+0.5	+394	+466	+111

A solid female sired by our Heavy Duty son. 039 is in the family of the original donor J071.

- Top 10% CW. Top 15% YW, Milk and M&G.
- Sells open.

26 H Mariah 7452 ET

3/13/17 • cow: 43799237 • TATTOO: 7452 • Horned

HH ADVANCE 1013Y ET
HH ADVANCE 4075B ET (CHB)
 HH MISS ADVANCE 0121X

NJW 735 W18 HOMETOWN 10Y ET (SOD,CHB,MDC)
H MS 0103 MARIAH 4489 ET
 H W4 MARIAH 0103 ET

HH ADVANCE 4055P
 HH MISS ADVANCE 7003T (DOD)
 HH ADVANCE 8203U ET (SOD)
 HH MISS ADVANCE 7050T
 SHF WONDER M326 W18 ET (CHB,SOD,MDC)
 NJW P606 72N DAYDREAM 735
 GOLDEN OAK OUTCROSS 18U (SOD,CHB)
 HH MISS ADVANCE 316N 1ET

CED	BW	WW	YW	MILK	M&G	CW	REA	MARB	\$BMI	\$BII	\$CHB
+0.4	+3.7	+59	+88	+20	+50	+86	+6.7	+22	+390	+472	+123

7452 really ties the pedigree together, backed by some of the top names in the Hereford breed. On the bottom, her maternal granddam is the immortal Mariah 0103 ET, who has proven to be one of the top producers in recent years. Her sire is the Holden Herefords, Hoffman Ranch and Cottonwood Cattle herd sire 4075, whose calves are powerful and stout with lots of body.

Top 1% CW. Top 3% REA and CHB. Top 10% Marb.

- AI 4/22/20 to EXR Bankroll 8130 ET and pasture exposed to same 4/25/20 to 7/3/20. Confirmed safe in calf.



H MS 0103 MARIAH 4489 ET

Donor dam of Lot 26

26a 6MC 7452 Heavy Man 025

2/29/20 • BULL: Reg. Pending • TATTOO: 025 • Horned

NJW 79Z 22Z HEAVY DUTY 72C ET
6MC 1237 HEAVY MAN 813
 H RW LADY REDEEM 1237 ET

HH ADVANCE 4075B ET (CHB)
H MARIAH 7452 ET
 H MS 0103 MARIAH 4489 ET

NJW 67U 28M BIG MAX 22Z
 BW 91H 100W RITA 79Z ET
 KJ HVH 33N REDEEM 485T ET (SOD)
 JSF 12N LADY VAL 9T
 HH ADVANCE 1013Y ET
 HH MISS ADVANCE 0121X
 NJW 735 W18 HOMETOWN 10Y ET (SOD,CHB)
 H W4 MARIAH 0103 ET

CED	BW	WW	YW	MILK	M&G	CW	REA	MARB	\$BMI	\$BII	\$CHB
+0.8	+3.5	+60	+94	+24	+54	+77	+5.6	+10	+375	+450	+111

Get on board with any offspring from the Mariah family. They offer the kind of predictable genetics that the Hereford breed needs. Top 10% CW. Top 15% REA.

27 CH Ms Nancy 607

3/16/16 • cow: 43683557 • TATTOO: BE 607 • Horned

CRR ABOUT TIME 743 (SOD)
CH NAVIGATOR 320 ET
 TCC MISS HARLAND 93 ET

CJH L1 DOMINO 530
EE MS ADVANCE 530 6282 8228
 EE 2136 L1 283 6282

THM DURANGO 4037 (SOD)
 CRR D03 CASSIE 206
 CJH HARLAND 408 (SOD)
 LCC TWO TIMIN 438 ET
 JA L1 DOMINO 230M
 CJH L1 DOMINETTE 2140
 CL L1 DOMINO 2136M
 EE MS 824 L1 283

CED	BW	WW	YW	MILK	M&G	CW	REA	MARB	\$BMI	\$BII	\$CHB
+1.8	+3.5	+50	+82	+33	+58	+71	+4.3	-11	+264	+312	+110

A hard working Navigator daughter with extra milk, she weaned her first two calves with a 115.5 weaning ratio, and the Extra Deep 200C daughter she is nursing right now will likely raise that number.

Navigator is sired by About Time, who may have sired as many National Champions as any Hereford bull, and out of a Harland/Two Timin dam. Nancy's dam is a solid pedigreed, straight Line One female from the historic EE Ranches.

Top 5% Milk. Top 10% M&G. Top 15% CW and CHB.

- Pasture exposed 4/15/20 to 8/15/20 to C Spot On 6128. Confirmed safe in calf.

27a CH Ms Extra Deep 038

3/5/20 • cow: 44161389 • TATTOO: BE 038 • Horned

ECR L18 EXTRA DEEP 9279 (SOD,CHB)
GKB 9279 EXTRA DEEP 200C ET
 C 88X NOTICE ME 2067 ET

CH NAVIGATOR 320 ET
CH MS NANCY 607
 EE MS ADVANCE 530 6282 8228

GO EXCEL L18 (SOD)
 OXH CHRISTI 0028
 NJW 98S R117 RIBEYE 88X ET (SOD)
 C NOTICE ME ET
 CRR ABOUT TIME 743 (SOD)
 TCC MISS HARLAND 93 ET
 CJH L1 DOMINO 530
 EE 2136 L1 283 6282

CED	BW	WW	YW	MILK	M&G	CW	REA	MARB	\$BMI	\$BII	\$CHB
+2.9	+3.3	+54	+83	+32	+59	+74	+5.4	-0.2	+362	+423	+115

The sire of this heifer calf is Curry's and GKB's Extra Deep "Bob" over 88X/Notice Me son. The genetics are here for this heifer to be quite a cow.

Top 10% Milk.

- Sells open.

28 6MC 0118 Cross Lady 835 ET

3/19/18 • cow: P43928297 • TATTOO: LE 835 • Polled

GOLDEN-OAK FUSION 3S
GOLDEN OAK OUTCROSS 18U (SOD,CHB)
 GOLDEN-OAK 60D MALLORY 15M

MSU TCF REVOLUTION 4R (SOD,CHB)
BOYD E70 QUEEN 0118
 BOYD E70 QUEEN 8101

GOLDEN-OAK 4J MAXIUM 28M (CHB,SOD)
 NCX MISS JR NELLIE 528N
 RU DUSTER 60D (CHB)
 GOLDEN-OAK P183 GLORIA 25G
 FELTONS LEGEND 242 (SOD)
 MSU TCF RACHAEL ET 54N
 RHF VICTOR 424 218 (SOD)
 BOYD E70 QUEEN 6128 ET

CED	BW	WW	YW	MILK	M&G	CW	REA	MARB	\$BMI	\$BII	\$CHB
+1.2	+4.3	+66	+105	+29	+62	+76	+6.2	+0.8	+361	+440	+108

This two-year-old's dam, 0118, is a donor that originated at Boyd Beef and we now own with Iron Lake Ranch. When 0118 is wet, she will easily have the best udder on almost any Hereford ranch. This combined with the female traits of Outcross projects 835 to be a top producer who will have excellent milk flow. Maternal sister sells as Lot 37.

Top 2% WW. Top 3% YW. Top 4% M&G. Top 5% REA. Top 10% CW. Top 15% Milk.

- AI 4/22/20 to Boyd Power Surge 9024.
 Pasture exposed 4/25/20 to 7/3/20 to EXR Bankroll 8130 ET.
 Safe to pasture exposure.

28a 6MC 6112 Cross Lady 044

3/15/20 • cow: P44155537 • TATTOO: LE 044 • Polled

DM BR SOONER (CHB)
ILR U201 SOONER 6112 ET
 KCF MISS PROFICIENT U201

GOLDEN OAK OUTCROSS 18U (SOD,CHB)
6MC 0118 CROSS LADY 835 ET
 BOYD E70 QUEEN 0118

REMITALL ONLINE 122L (CHB,SOD)
 DM L1 DOMINETTE 901
 EFBEFF SCHU-LAR PROFICIENT N093 (SOD)
 KCF MISS 774 L82
 GOLDEN-OAK FUSION 3S
 GOLDEN-OAK 60D MALLORY 15M
 MSU TCF REVOLUTION 4R (SOD,CHB)
 BOYD E70 QUEEN 8101

CED	BW	WW	YW	MILK	M&G	CW	REA	MARB	\$BMI	\$BII	\$CHB
+1.6	+3.1	+60	+95	+27	+57	+77	+6.8	+0.9	+395	+470	+118

044 is sired by the Iron Lake Ranch herd sire 6112 (Sooner X U201). The total pedigree here from top to bottom has "future donor" all over it.

Top 4% REA. Top 10% CW and CHB.

- Sells open.

LOTS 29 - 31:

SPRING BRED COWS WITH BULL CALVES



29 **EXR 2Y 4R** *Delfina* **5095** {DLF,HYF,IEF,MSUDF}
3/17/15 • cow: P43577044 • TATTOO: BE 5095 • Hom. Polled

FELTONS LEGEND 242 (SOD)
MSU TCF REVOLUTION 4R (SOD,CHB)
MSU TCF RACHAEL ET 54N

TH SHR 605 57G BISMARCK 243R ET (SOD)
TH 55P 243R LORETTA 2Y
TH 6M 19D LORETTA 55P

FELTONS DOMINO 774 (SOD)
FELTONS G15
REMITALL ONLINE 122L (CHB,SOD)
HH MISS ADV 786G 1ET
RU 20X BOULDER 57G (SOD)
YY 125Y PRIMROSE 605F
NJW 1Y WRANGLER 19D (SOD)
TH 8J 57G LORETTA 6M

CED	BW	WW	YW	MILK	M&G	CW	REA	MARB	\$BMI	\$BII	\$CHB
-2.8	+3.5	+58	+97	+19	+48	+67	+66	-.05	+321	+382	+102

This homozygous polled Revolution daughter was purchased from Express Ranches and has been a consistent producer. She is a deep bodied, square hiped female with extra length and a very smooth, feminine front end. She exhibits the udder quality that is expected in Revolution daughters, and you can tell from the bull calf she is nursing what a mother she is. A daughter sells as Lot 40.

Top 3% REA. Top 10% YW. Top 15% WW.

Owned by Rockin' Shocker, Fort Worth, TX.

• AI 4/22/20 to Boyd Power Surge 9024.

Pasture exposed 4/25/20 to 7/3/20 to EXR Bankroll 8130 ET.

Confirmed safe in calf, too close to call. DNA to determine sire.

29a **ROCKIN 5095 27A** *Loverboy* **007**
2/14/20 • BULL: P44156844 • TATTOO: LE 007 • Polled

NJW 73S W18 HOMETOWN 10Y ET (SOD,CHB,MDC)
NJW 135U 10Y HOMETOWN 27A (MDC)
NJW 4037 34S DURANGO VACA 135U (DOD)

MSU TCF REVOLUTION 4R (SOD,CHB)
EXR 2Y 4R DELFINA 5095
TH 55P 243R LORETTA 2Y

SHF WONDER M326 W18 ET (CHB,SOD,MDC)
NJW P606 72N DAYDREAM 73S
THM DURANGO 4037 (SOD)
NJW P606 80L DAYDREAM 34S ET
FELTONS LEGEND 242 (SOD)
MSU TCF RACHAEL ET 54N
TH SHR 605 57G BISMARCK 243R ET (SOD)
TH 6M 19D LORETTA 55P

CED	BW	WW	YW	MILK	M&G	CW	REA	MARB	\$BMI	\$BII	\$CHB
+5.9	+0.3	+53	+83	+23	+49	+67	+58	+01	+370	+434	+96

If you need a calving ease bull that will still add performance at weaning, take a look at 007.

Owned by Rockin' Shocker, Fort Worth, TX.



Rockin' Shocker
Robert Schacher • (817) 219-0102
5832 Wales Avenue
Fort Worth, TX 76133
robschacher@gmail.com

SPRING BRED COWS WITH BULL CALVES



CH MS REBA 7016 ET
Donor dam of Lot 30

30 CH Ruby 526 ET

4/24/15 • cow: P43617820 • TATTOO: BE 526 • Polled

H WCC/WB 668 WYARNO 9500 ET (SOD)
H/TSR/CHEZ/FULL THROTTLE ET (CHB)
R SWEET RED WINE 039

TH JWR SOP 16G 57G TUNDRA 63N (SOD)
H KATHY 668 ET
MSU TCF REVOLUTION 4R (SOD,CHB)
R MISS WRANGLER 207

BR MOLER ET
CH MS REBA 7016 ET
CH MISS OK GOLD 0053 (DOD)

REMITALL ONLINE 122L (CHB,SOD)
DM L1 DOMINETTE 820
C -S PURE GOLD 98170 (CHB,SOD)
MS L1 OKIE 6020

CH	CED	BW	WW	YW	MILK	M&G	CW	REA	MARB	\$BMI	\$BII	\$CHB
	-1.3	+3.9	+57	+94	+25	+54	+73	+66	-0.6	+264	+320	+115

A Full Throttle daughter from 7016, the donor that shows up in the best of the Curry Herefords bloodlines. She has a very well balanced set of data and a progeny weaning ratio of 113.

Top 3% REA. Top 10% CHB. Top 15% YW and CW.

• Pasture exposed 4/15/20 to 8/15/20 to C Spot On 6128. Confirmed safe in calf.

30a CH Extra Deep 026

2/5/20 • BULL: 44161388 • TATTOO: BE 026 • Horned

ECR L18 EXTRA DEEP 9279 (SOD,CHB)
GKB 9279 EXTRA DEEP 200C ET
C 88X NOTICE ME 2067 ET

H/TSR/CHEZ/FULL THROTTLE ET (CHB)
CH RUBY 526 ET
CH MS REBA 7016 ET

GO EXCEL L18 (SOD)
OXH CHRISTI 0028
NJW 98S R117 RIBEYE 88X ET (SOD)
C NOTICE ME ET

H WCC/WB 668 WYARNO 9500 ET (SOD)
R SWEET RED WINE 039
BR MOLER ET
CH MISS OK GOLD 0053 (DOD)

CH	CED	BW	WW	YW	MILK	M&G	CW	REA	MARB	\$BMI	\$BII	\$CHB
	+1.1	+3.6	+58	+90	+27	+56	+75	+65	.00	+359	+424	+117

Sired by Extra Deep 200C, this bull calf can go into a program that raises their own replacement females. He has balanced data and a powerful look.

Top 5% REA. Top 10% CHB. Top 15% CW.

31 EXR Keyshona 4119 ET (DLF,HYF,IEF)

8/18/14 • BULL: P43517745 • TATTOO: BE 4119 • Polled

HH ADVANCE 3196N (SOD)
GO 3196 ADVANCE S109 (SOD)
GO MS L18 EXCEL N89

REMITALL ONLINE 122L (CHB,SOD)
STAR KKH SSF KEYSHONA 25W ET
SSF KEYSHA 949

HH ADVANCE 932J 1ET (SOD,CHB)
HH MISS ADVANCE 9082J (DOD)
GO EXCEL L18 (SOD)
GO MS 309C ADVANCE 0036

REMITALL EMBRACER 8E (SOD)
REMITALL CATALINA 24H
REMITALL KEYNOTE 20X (SOD,CHB)
TOP MSU MS 15G 8619

CH	CED	BW	WW	YW	MILK	M&G	CW	REA	MARB	\$BMI	\$BII	\$CHB
	-0.7	+5.8	+66	+106	+19	+52	+83	+62	+1.0	+278	+352	+137

This S109 daughter traces back to one of the most successful donors in the Hereford breed, Keysha from Todd, Kim and Kasey Herman with Star Lake Cattle Ranch. This is a big, stout cow that will make calves with the right look and performance.

Top 1% CHB. Top 2% WW and CW. Top 3% YW. Top 5% REA.

• Pasture exposed 4/15/20 to 8/15/20 to C Spot On 6128. Confirmed safe in calf.

31a CH Extra Deep 033

2/20/20 • BULL: 44161416 • TATTOO: BE 033 • Horned

ECR L18 EXTRA DEEP 9279 (SOD,CHB)
GKB 9279 EXTRA DEEP 200C ET
C 88X NOTICE ME 2067 ET

GO 3196 ADVANCE S109 (SOD)
EXR KEYSHONA 4119 ET
STAR KKH SSF KEYSHONA 25W ET

GO EXCEL L18 (SOD)
OXH CHRISTI 0028
NJW 98S R117 RIBEYE 88X ET (SOD)
C NOTICE ME ET

HH ADVANCE 3196N (SOD)
GO MS L18 EXCEL N89
REMITALL ONLINE 122L (CHB,SOD)
SSF KEYSHA 949

CH	CED	BW	WW	YW	MILK	M&G	CW	REA	MARB	\$BMI	\$BII	\$CHB
	+2.2	+4.4	+62	+95	+25	+55	+80	+63	+0.9	+366	+441	+128

A 200C son that is not only bred for performance but for look as well. He is stout with extra muscle and is ready to be grown into a herd bull.

Top 2% CHB. Top 10% CW and REA. Top 15% WW.

SPRING BRED HEIFERS

LOTS 32 - 41:

SPRING BRED HEIFERS



32 6MC J071 *Lauren* 911 ET

2/9/19 • cow: 44078437 • TATTOO: LE 911 • Horned

GO EXCEL L18 (SOD)
ECR L18 EXTRA DEEP 9279 (SOD,CHB)
 OXH CHRISTI 0028

MSU TCF REVOLUTION 4R (SOD,CHB)
SSF 163P MS REVOLUTION 071
 JWR 4088 PRINCESS 163P

DD EXCEL DESIGN 40 (SOD)
 GO MS 124 ADVANCE 7005
 CL 1 DOMINO 5131E (SOD,CHB)
 OXH LOLA 8328

FELTONS LEGEND 242 (SOD)
 MSU TCF RACHAEL ET 54N
 PW VICTOR BOOMER P606 (SOD)
 HRP VICTORIA 103T 4088

CED	BW	WW	YW	MILK	M&G	CW	REA	MARB	\$BMI	\$BII	\$CHB
+1.3	+3.2	+54	+81	+30	+57	+76	+68	+05	+398	+464	+115

Leading off The Exclusive bred heifer division is Lauren, a daughter of ECR L18 Extra Deep 9279 "Bob." The Bob daughters all over the country are awesome to see with their great udders and their overall appearance. In addition, Lauren is a direct daughter of J071, the Revolution/P606 that is one of the original donors of the Six Mile Creek program.

Lauren is a dark colored, stout made heifer with power in her top, hip and rear leg. She has the look, power and pedigree to make her a mother that you could build a herd around.

Top 4% REA. Top 10% CHB. Top 15% Milk and CW.

- AI 5/1/20 to NJW 135U 10Y Hometown 27A. Checked safe to AI date. PE 5/3/20 to 7/6/20 to ILR U201 Sooner 6112 ET.



STAR SOPHISTICATION 256Z ET

Donor dam of Lot 33

33 6MC 256Z *Brooke* 907 ET

2/6/19 • cow: P44078429 • TATTOO: LE 907 • Polled

GO EXCEL L18 (SOD)
ECR L18 EXTRA DEEP 9279 (SOD,CHB)
 OXH CHRISTI 0028

REMITALL ONLINE 122L (CHB,SOD)
STAR SOPHISTICATION 256Z ET
 MSU APOLLONIA 10M

DD EXCEL DESIGN 40 (SOD)
 GO MS 124 ADVANCE 7005
 CL 1 DOMINO 5131E (SOD,CHB)
 OXH LOLA 8328
 REMITALL EMBRACER 8E (SOD)
 REMITALL CATALINA 24H
 SHF INTERSTATE 20X D03 (SOD)
 APOLLONIA OF BAR B 74

CED	BW	WW	YW	MILK	M&G	CW	REA	MARB	\$BMI	\$BII	\$CHB
+3.8	+3.3	+54	+85	+27	+54	+72	+41	.00	+299	+360	+115

Brooke's dam is the Six Mile Creek feature donor 256Z, who is known for producing the kind that can be successful on the chips as well as in the pasture. Combined with Extra Deep "Bob," this is a can't-miss female. Bonus: the Blueprint calf she is carrying will be a powerhouse!

Top 10% CHB.

- AI 5/1/20 to Boyd 31Z Blueprint 6153. Checked safe to AI date. PE 5/3/20 to 7/6/20 to ILR U201 Sooner 6112 ET.

SPRING BRED HEIFERS



R SWEET RED WINE 039

Paternal granddam of Lot 34

34 6MC 652D Elinor 900

1/17/19 • cow: P44156441 • TATTOO: LE 900 • Polled

R LEADER 6964 (CHB)
CHEZ DANTE 652D ET (CHB)
 R SWEET RED WINE 039

HYALITE ON TARGET 936 (SOD)
 R MISS REVOLUTION 1009 (DOD)
 MSU TCF REVOLUTION 4R (SOD,CHB)
 R MISS WRANGLER 207
 THM DURANGO 4037 (SOD)
 CRR D03 CASSIE 206
 NJW FHF 9710 TANK 45P (SOD)
 KJ 520E PURE VICKIE 750P ET

CRR ABOUT TIME 743 (SOD)
WF MISS ELINOR E344 ET
 WF MISS TANK T44 ET

CED	BW	WW	YW	MILK	M&G	CW	REA	MARB	\$BMI	\$BII	\$CHB
+2.3	+2.8	+55	+88	+24	+51	+68	+40	-03	+352	+414	+113

Elinor's sire, Dante, is a Leader son out of the immortal Sweet Red Wine, who also produced Full Throttle, Cabernet, Chardonnay, Strawberry Wine and many others that have ruled the show ring. You can see from her color and design that Elinor is a descendant of the great Sweet Red Wine, so you can count on her to produce. She is very long and angular fronted and carries her length over her spine and through the hip. On the bottom side, Elinor's dam is a direct daughter of About Time. Her Blueprint calf could be a homerun.

- AI 5/1/20 to Boyd 31Z Blueprint 6153. Checked safe to AI date.
 PE 5/3/20 to 7/6/20 to ILR U201 Sooner 6112 ET.



35a 6MC 308 Trusted Lady 918 ET

2/17/19 • cow: P44078487 • TATTOO: LE 918 • Polled

KCF BENNETT 3008 M326 (SOD)
NJW 735 M326 TRUST 100W ET (SOD,CHB)
 NJW P606 72N DAYDREAM 735

RRH MR FELT 3008 (CHB,SOD)
 KCF MISS 459 F284
 PW VICTOR BOOMER P606 (SOD)
 NJW 94J DEW 72N

HH ADVANCE 6052F (SOD)
KSU MISS 6052F 308 ET
 MISS MARK K 111 (DOD)

CL 1 DOMINO 392 (SOD)
 HH MISS ADVANCE 160A (DOD)
 OXH MARK DOMINO 8020 (SOD)
 MISS 75B K 407

CED	BW	WW	YW	MILK	M&G	CW	REA	MARB	\$BMI	\$BII	\$CHB
+5.7	+2.3	+53	+86	+30	+57	+73	+52	+08	+367	+433	+122

Top 4% CHB. Top 15% Milk.

- AI 5/1/20 to NJW 135U 10Y Hometown 27A. Checked safe to AI date.
 PE 5/3/20 to 7/6/20 to ILR U201 Sooner 6112 ET.

35b 6MC 308 Trusted Lady 924 ET

3/17/19 • cow: 44078481 • TATTOO: 924 • Horned

KCF BENNETT 3008 M326 (SOD)
NJW 735 M326 TRUST 100W ET (SOD,CHB)
 NJW P606 72N DAYDREAM 735

RRH MR FELT 3008 (CHB,SOD)
 KCF MISS 459 F284
 PW VICTOR BOOMER P606 (SOD)
 NJW 94J DEW 72N

HH ADVANCE 6052F (SOD)
KSU MISS 6052F 308 ET
 MISS MARK K 111 (DOD)

CL 1 DOMINO 392 (SOD)
 HH MISS ADVANCE 160A (DOD)
 OXH MARK DOMINO 8020 (SOD)
 MISS 75B K 407

CED	BW	WW	YW	MILK	M&G	CW	REA	MARB	\$BMI	\$BII	\$CHB
+5.7	+2.3	+53	+86	+30	+57	+73	+52	+08	+367	+433	+122

Top 4% CHB. Top 15% Milk.

- AI 5/1/20 to NJW 135U 10Y Hometown 27A.
 PE 5/3/20 to 7/6/20 to ILR U201 Sooner 6112 ET.
 Confirmed safe to pasture exposure.

The dam of the flush sisters selling as Lots 35A and 35B, 308, is the famed donor that hails from Kansas State and now resides at Matheny Herefords in Kentucky. She is the backbone of their great herd, where she has produced herd bulls that have sold across the country, daughters that have become elite dams and show heifers. She is out of the immortal Miss K 111 cow and sired by 6052F from Holden and EE Ranches. This mating to Trust combines the best in carcass, maternal and performance genetics with phenotype and genetic integrity. Some of the best females in the breed reside in these genetics.

SPRING BRED HEIFERS



36 ROCKIN 27A *Apollonia* 9003 ET
3/21/19 • cow: P44078549 • TATTOO: LE 9003 • Polled

37 6MC 0118 *Classic Lady* 906 ET
2/5/19 • cow: P44078425 • TATTOO: LE 906 • Polled

NJW 735 W18 HOMETOWN 10Y ET (SOD,CHB,MDC) SHF WONDER M326 W18 ET (CHB,SOD,MDC)
NJW 135U 10Y HOMETOWN 27A (MDC) NJW P606 72N DAYDREAM 735
 NJW 4037 345 DURANGO VACA 135U (DOD) THM DURANGO 4037 (SOD)
 NJW P606 80L DAYDREAM 345 ET
 TH 223 71I VICTOR 755T (SOD) DRF JWR PRINCE VICTOR 71I (SOD)
BOYD 37X APOLLONIA 4137ET KBCR 19D DOMINETTE 223
 MSU APOLLONIA 37X ET REMITALL ONLINE 122L (CHB,SOD)
 MSU APOLLONIA 10M

ECR WHO MAKER 210 ET DKF RO CASH FLOW 0245 ET (SOD)
T/R BPF AMERICANCLASSIC 561CET RV GOLDEN LADY 5064
 TFR PARIS 415 ET LAGRAN RELOAD 80P ET (SOD,CHB)
 CRR D03 COTTON 356
 MSU TCF REVOLUTION 4R (SOD,CHB) FELTONS LEGEND 242 (SOD)
BOYD E70 QUEEN 0118 MSU TCF RACHAEL ET 54N
 BOYD E70 QUEEN 8101 RHF VICTOR 424 218 (SOD)
 BOYD E70 QUEEN 6128 ET

CED	BW	WW	YW	MILK	M&G	CW	REA	MARB	\$BMI	\$BII	\$CHB
+5.0	+1.7	+61	+94	+32	+62	+76	+52	+01	+369	+441	+110

CED	BW	WW	YW	MILK	M&G	CW	REA	MARB	\$BMI	\$BII	\$CHB
-0.5	+3.5	+59	+93	+28	+57	+77	+67	+10	+303	+374	+116

The dam of 9003 is the famed Boyd Beef Cattle's Apollonia 4137, who is a direct daughter of Apollonia 37X that sold for \$48,000 to John Ade in Maryland. The embryos that produced 9003 were purchased as Lot 1 from the 2017 Breeders' Cup Sale. 9003 is moderate framed and maternal appearing with a great structure. She is safe to Blueprint, so if you follow the Boyd program, you need to take a look at 9003.

The dam of Lot 37, Queen 0118, is right from the heart of the Boyd program. Owned with Iron Lake Ranch, this donor is one of the best looking cows in the breed with an udder that is envied by all who see her. Again, American Classic has done his work by adding look, style and muscle. A maternal sister sells as Lot 28.

- Owned by Rockin' Shocker, Fort Worth, TX.
- Top 10% Milk and M&G. Top 15% WW and CW.
- AI 5/1/20 to Boyd 31Z Blueprint 6153. Checked safe to AI date. PE 5/3/20 to 7/6/20 to ILR U201 Sooner 6112 ET.

- Top 4% REA. Top 10% CW and CHB.
- AI 5/1/20 to NJW 135U 10Y Hometown 27A. Checked safe to AI date. PE 5/3/20 to 7/6/20 to ILR U201 Sooner 6112 ET.

38 6MC 2528 *Kassidy* 938
4/2/19 • cow: P44112570 • TATTOO: LE 938 • Polled

39 6MC 561C *Savanna* 916
2/16/19 • cow: 44156330 • TATTOO: LE 916 • Horned

ECR WHO MAKER 210 ET DKF RO CASH FLOW 0245 ET (SOD)
T/R BPF AMERICANCLASSIC 561CET RV GOLDEN LADY 5064
 TFR PARIS 415 ET LAGRAN RELOAD 80P ET (SOD,CHB)
 CRR D03 COTTON 356
 AH JDH CRACKER JACK 26U ET (SOD) NJW 1Y WRANGLER 19D (SOD)
H DELHAWK LADY CRACKER JACK 2528 CRR D03 VIOLET 349
 CIRCLE-D 32P SARA 26S CIRCLE-D 22H PACMAN 32P
 CIRCLE-D 137K SARA 97P

ECR WHO MAKER 210 ET DKF RO CASH FLOW 0245 ET (SOD)
T/R BPF AMERICANCLASSIC 561CET RV GOLDEN LADY 5064
 TFR PARIS 415 ET LAGRAN RELOAD 80P ET (SOD,CHB)
 CRR D03 COTTON 356
 NJW 98S R117 RIBEYE 88X ET (SOD) SHF RIB EYE M326 R117 (SOD)
WPF 0195 88X SAVANNA 2003 NJW 9126J DEW DOMINO 98S (DOD)
 C LADY NITRO 0195 UPS TCC NITRO 1ET (CHB,SOD)
 C MS GAME PLAN 5161 (DOD)

CED	BW	WW	YW	MILK	M&G	CW	REA	MARB	\$BMI	\$BII	\$CHB
-2.8	+5.0	+54	+88	+23	+49	+73	+52	+10	+292	+358	+115

CED	BW	WW	YW	MILK	M&G	CW	REA	MARB	\$BMI	\$BII	\$CHB
+4.0	+2.3	+52	+86	+28	+54	+78	+66	+15	+326	+393	+122

Cracker Jack 2528 was Kassidy's first show heifer, and she has been a reliable part of the program since her show career ended. Once again, American Classic adds the eye appeal and extra thickness.

We just can't stress enough how much American Classic has improved our program. He produces females like this with balance and style. On the bottom of this pedigree you find 88X, who stands the test of time for maternal genetics. Here is a nice package for any breeder to consider.

- Full sisters sell as Lots 7A and 7B.
- Top 10% CHB.
- AI 5/1/20 to NJW 135U 10Y Hometown 27A. Checked safe to AI date. PE 5/3/20 to 7/6/20 to ILR U201 Sooner 6112 ET.

- Top 4% REA and CHB. Top 10% CW.
- AI 5/1/20 to NJW 135U 10Y Hometown 27A. Checked safe to AI date. PE 5/3/20 to 7/6/20 to ILR U201 Sooner 6112 ET.

SPRING BRED HEIFERS



EXR 2Y 4R DELFINA 5095
Dam of Lot 40...sells as Lot 29



C SPOT ON 6128 ET
Sire of Lot 41

440 **ROCKIN 5095** *Lady Duty 908*

2/7/19 • cow: P44112485 • TATTOO: LE 908 • Polled

NJW 67U 28M BIG MAX 22Z
NJW 79Z 22Z HEAVY DUTY 72C ET
BW 91H 100W RITA 79Z ET

GOLDEN-OAK 4J MAXIUM 28M (CHB,SOD)
NJW 4037 80L FAITH 67U (DOD)
NJW 73S M326 TRUST 100W ET (SOD,CHB)
REMITALL RITA 91H

MSU TCF REVOLUTION 4R (SOD,CHB)
EXR 2Y 4R DELFINA 5095
TH 55P 243R LORETTA 2Y

FELTONS LEGEND 242 (SOD)
MSU TCF RACHAEL ET 54N
TH SHR 605 57G BISMARCK 243R ET (SOD)
TH 6M 19D LORETTA 55P

CED	BW	WW	YW	MILK	M&G	CW	REA	MARB	\$BMI	\$BII	\$CHB
-1.1	+4.1	+64	+103	+28	+59	+71	+6.1	-0.6	+342	+409	+105

Like her mother, this Heavy Duty daughter is very proportional in size, length and depth. She has a big middle and a solid framework. She combines this with a broody look and the development of a nice udder. Her dam sells as Lot 29.

Top 10% WW, YW and REA.

Owned by Rockin' Shocker, Fort Worth, TX.

- AI 5/1/20 to Boyd 31Z Blueprint 6153. Checked safe to AI date.
- PE 5/3/20 to 7/6/20 to ILR U201 Sooner 6112 ET.

441 **CH MS 301** *Jane 9209 ET* [DLF,HYF,IEF,MSUDF]

2/28/19 • cow: 44053198 • TATTOO: BE 9209 • Horned

CRR 5280
C SPOT ON 6128 ET
C 88X NOTICE ME 1311 ET

CRR 719 CATAPULT 109 (SOD)
CRR 435 KELLY 178 (DOD)
NJW 98S R117 RIBEYE 88X ET (SOD)
C NOTICE ME ET

CL 1 DOMINO 955W (CHB,SOD)
DM L1 DOMINETTE 301 ET
DM L1 DOMINETTE 901

CL 1 DOMINO 6375 1ET (CHB)
CL 1 DOMINETTE 5152R
HH ADVANCE 688F 1ET
DM L1 DOMINETTE P640

CED	BW	WW	YW	MILK	M&G	CW	REA	MARB	\$BMI	\$BII	\$CHB
-0.4	+4.2	+62	+92	+33	+64	+85	+9.5	-0.8	+412	+476	+127

We are very excited about the Spot On daughters as they enter production. They are showing nice, tight udders with great suspension and still maintain the look that makes them so popular. Jane's dam is a straight Line One cow sired by the very stylish 955W.

Top 1% REA. Top 2% CW and CHB. Top 5% M&G. Top 10% Milk and BMI. Top 15% WW.

- PE 11/20/19 to 4/7/20 to CJC DM FPH 8Y Bill 540 ET. Confirmed safe in calf.



FALL CALVERS



**LOTS 42-55:
FALL COW/CALF PAIRS
& HEAVY BREDS**

*Full sisters to
High Roller
sell as Lots 42 & 43*



CH HIGH ROLLER 756 ET
Full brother to Lots 42 & 43



42 CH MS 8023 *Bothany* 7250 ET

4/6/17 • cow: P43831041 • TATTOO: BE 7250 • Polled

STAR TCF LOCK-N-LOAD 300W ET
TFR KU ROLL THE DICE 1326
LH LANGFORD LADY 0253 ET

TFR HIGH COTTON 328 ET (SOD)
CH MAGIE 8023
CH GOLDEN CAT 4016 1ET

LAGRAND RELOAD 80P ET (SOD,CHB)
STAR TCF ADV ORALEE 173P ET
THM DURANGO 4037 (SOD)
LPG 59K INDEPENDENCE LASS 22N
LAGRAND RELOAD 80P ET (SOD,CHB)
CRR D03 COTTON 356
C-\$ PURE GOLD 98170 (CHB,SOD)
C 501 MS DOM 93123

CH	CED	BW	WW	YW	MILK	M&G	CW	REA	MARB	\$BMI	\$BII	\$CHB
	-3.9	+5.0	+62	+105	+28	+59	+86	+72	-.05	+286	+348	+133

Top 1% CHB. Top 2% CW and REA. Top 10% YW. Top 15% WW and M&G.
• **LOT 42A:** Heifer calf born 9/10/20 sired by CJC DM FPH 8Y Bill 540 ET.

43 CH MS 8023 *Alyssa* 7216 ET

3/2/17 • cow: P43831040 • TATTOO: BE 7216 • Polled

STAR TCF LOCK-N-LOAD 300W ET
TFR KU ROLL THE DICE 1326
LH LANGFORD LADY 0253 ET

TFR HIGH COTTON 328 ET (SOD)
CH MAGIE 8023
CH GOLDEN CAT 4016 1ET

LAGRAND RELOAD 80P ET (SOD,CHB)
STAR TCF ADV ORALEE 173P ET
THM DURANGO 4037 (SOD)
LPG 59K INDEPENDENCE LASS 22N
LAGRAND RELOAD 80P ET (SOD,CHB)
CRR D03 COTTON 356
C-\$ PURE GOLD 98170 (CHB,SOD)
C 501 MS DOM 93123

CH	CED	BW	WW	YW	MILK	M&G	CW	REA	MARB	\$BMI	\$BII	\$CHB
	-3.8	+5.0	+62	+105	+28	+59	+86	+72	-.05	+286	+348	+133

Top 1% CHB. Top 2% CW and REA. Top 10% YW. Top 15% WW and M&G.
• **PE 11/20/19 to 4/7/20 to CJC DM FPH 8Y Bill 540 ET. Confirmed safe in calf.**

We are featuring two full sisters to High Roller to open the fall calving division. High Roller needs no introduction. He was a popular division champion at the 2019 National Western Stock Show before being named Reserve Grand Champion Polled Bull at Fort Worth in 2019. He has continued his popularity, and you can see why from the way he has developed with loads of muscle and rib and a perfect design to his hip and rear leg. He exhibits power from end to end, which is evident in the way he stands off both ends and in the shape through his forearm. You can see from the style and balance in these two full sisters to him why he is going to be a huge part of the Curry Herefords plan moving forward.

FALL CALVERS



44 **EXR Miss Lexus 8142 ET** {DLF,HYF,IEF}
 2/2/18 • cow: P43899160 • TATTOO: BE 8142 • Polled

CRR ABOUT TIME 743 {SOD}
CHAC MASON 2214 {CHB}
 GKB 31 GRACE 7100

THM DURANGO 4037 {SOD}
 CRR D03 CASSIE 206
 CCLC GKB PURE GOLD 31
 L STAR GOLDIE P153

LSW WCC ABOUT TIME X06
EXR MISS LEXUS 4203 ET
 TCC MISS LEXUS 84 ET

CRR ABOUT TIME 743 {SOD}
 WBCC WCC 69P MS RANGELAND U800
 SLDK POSEIDON R09 ET
 LCC TWO TIMIN 438 ET

CH	CED	BW	WW	YW	MILK	M&G	CW	REA	MARB	\$BMI	\$BII	\$CHB
	-3.3	+5.1	+55	+89	+29	+56	+83	+96	-11	+315	+365	+138

Sired by the former Denver Champion Mason, this female has that special look to her. She's very chiseled and angular through her front end yet very stout from the shoulder back.

Top 1% REA and CHB. Top 3% CW.

• **LOT 44A:** Heifer calf born 9/15/20 sired by CJC DM FPH 8Y Bill 540 ET.

45 **CH MS 377 Mason 8256 ET**
 11/4/18 • cow: P44007990 • TATTOO: BE 8256 • Polled

CRR ABOUT TIME 743 {SOD}
CHAC MASON 2214 {CHB}
 GKB 31 GRACE 7100

THM DURANGO 4037 {SOD}
 CRR D03 CASSIE 206
 CCLC GKB PURE GOLD 31
 L STAR GOLDIE P153

TH 89T 743 UNTAPPED 425X ET
DM 966 CLAIRE 377
 DM 646 CLAIRE 966 ET

CRR ABOUT TIME 743 {SOD}
 TH 16G 20N GEMINI 89T
 BR LANSING 3060
 DM BR TERRI 646 ET

CH	CED	BW	WW	YW	MILK	M&G	CW	REA	MARB	\$BMI	\$BII	\$CHB
	-1.4	+3.9	+50	+79	+21	+46	+75	+67	-05	+271	+322	+113

Another very eye-appealing daughter of the former Denver Champion Mason. She has added depth and a youthful, maternal appearance.

Top 4% REA. Top 15% CW and CHB.

• **PE 11/20/19 to 4/7/20 to CJC DM FPH 8Y Bill 540 ET. Confirmed safe in calf.**



CHAC MASON 2214
 Sire of Lots 44-46

46 **CH MS 3307 Mason 8251**
 10/19/18 • cow: 44007988 • TATTOO: BE 8251 • Horned

CRR ABOUT TIME 743 {SOD}
CHAC MASON 2214 {CHB}
 GKB 31 GRACE 7100

THM DURANGO 4037 {SOD}
 CRR D03 CASSIE 206
 CCLC GKB PURE GOLD 31
 L STAR GOLDIE P153

GOLDEN OAK OUTCROSS 18U {SOD,CHB}
CH LADY OUTCROSS 3307
 CH MISS ALLISON 9121 ET

GOLDEN-OAK FUSION 3S
 GOLDEN-OAK 60D MALLORY 15M
 BR MOLER ET
 HH MISS ADVANCE 365N

CH	CED	BW	WW	YW	MILK	M&G	CW	REA	MARB	\$BMI	\$BII	\$CHB
	-3.5	+5.7	+56	+91	+25	+53	+76	+70	-12	+289	+340	+116

This Mason is out of one of our top Outcross daughters, and if you study the bottom of this pedigree, you will find the famous Holden donor 365N, who has progeny in many prominent herds across North America. This female could have an immediate impact on any program.

Top 3% REA. Top 10% CHB. Top 15% CW.

• **PE 11/20/19 to 4/7/20 to CJC DM FPH 8Y Bill 540 ET. Confirmed safe in calf.**

FALL CALVERS



47 CH Ms Jade 827

5/4/18 • cow: 43935219 • TATTOO: BE 827 • Horned

NJW 985 R117 RIBEYE 88X ET (SOD)
CH 88X INTERN 458 ET
 CH JR JUDY 0040 ET

JR ENERGIZER 2102
JR 0040 MISS APACHE 2101 628
 CH JR JUDY 0040 ET

SHF RIB EYE M326 R117 (SOD)
 NJW 9126J DEW DOMINO 985 (DOD)
 DM BR L1 DOMINO 146 (SOD)
 CH MS REBA 7016 ET
 TH 75J 243R BAILOUT 144U ET (SOD,CHB)
 KE UNNA 8072 P606 ET
 DM BR L1 DOMINO 146 (SOD)
 CH MS REBA 7016 ET



CED	BW	WW	YW	MILK	M&G	CW	REA	MARB	\$BMI	\$BII	\$CHB
-0.1	+3.4	+58	+89	+28	+57	+59	+42	+03	+308	+376	+94

Jade is a power female that has all the right parts in all the right places. From the ground up, she is big footed and heavy boned. She stretches a solid cover of muscle over her skeletal dimension and still has a sweet head and neck makeup.

- Will calve this fall to GKB 9279 Extra Deep 200C.



48 CH Ms Beauty 817

4/1/18 • cow: 43923819 • TATTOO: BE 817 • Horned

NJW 985 R117 RIBEYE 88X ET (SOD)
CH 88X INTERN 458 ET
 CH JR JUDY 0040 ET

TH 22R 16S LAMBEAU 17Y
CH MS RAINBEAU 411
 CH MS REBA 7016 ET

SHF RIB EYE M326 R117 (SOD)
 NJW 9126J DEW DOMINO 985 (DOD)
 DM BR L1 DOMINO 146 (SOD)
 CH MS REBA 7016 ET
 TH 121L 63N TUNDRA 16S
 TH 62N 3L KELSEY 22R
 BR MOLER ET
 CH MISS OK GOLD 0053 (DOD)



CED	BW	WW	YW	MILK	M&G	CW	REA	MARB	\$BMI	\$BII	\$CHB
+9.0	+0.7	+55	+87	+26	+53	+58	+44	+10	+291	+358	+95

Ms Beauty is very much named correctly. This Intern daughter shows what we expect from our two-year-olds at Curry Herefords. She is deep bodied with adequate muscle and a good, square hip. Her dam is one of our best donors, the Lambeau daughter Rainbeau. A maternal sister sells as Lot 22.

- PE 11/20/19 to 8/15/20 to CH Spot On 860 ET. Should calve before sale day.



CH MS RAINBEAU 411

Dam of Lot 48



49 CH Ms Whitney 7003

5/9/17 • cow: P43846759 • TATTOO: BE 7003 • Polled

NJW 985 R117 RIBEYE 88X ET (SOD)
CH 88X INTERN 458 ET
 CH JR JUDY 0040 ET

NJW 1Y WRANGLER 19D (SOD)
SLDK MISS 19D 326 ET
 SHF LADY 512 G10 ET

SHF RIB EYE M326 R117 (SOD)
 NJW 9126J DEW DOMINO 985 (DOD)
 DM BR L1 DOMINO 146 (SOD)
 CH MS REBA 7016 ET
 CIRCLE-D WRANGLER 832W (CHB,SOD)
 NJW FROSTY 1Y
 MM RSM STOCKMASTER 512 (SOD)
 SHF MS JUSTN 7115J Z24 (DOD)



CED	BW	WW	YW	MILK	M&G	CW	REA	MARB	\$BMI	\$BII	\$CHB
-0.3	+3.8	+51	+80	+25	+50	+55	+38	+09	+315	+379	+96

The Intern daughters have a distinguished look and are doing a great job raising their calves. Whitney weaned her first calf with a 112 ratio and looks poised to keep this work up with her September heifer calf at side.

- LOT 49A: Heifer calf born 9/18/20 sired by CH Spot On 860 ET.



50 CH Ms Leah 5222 ET

4/19/15 • cow: 43623722 • TATTOO: BE 5222 • Horned

CRR ABOUT TIME 743 (SOD)
WCC/CC 1009 GREAT DIVIDE 102
 WRB ELIZABETH 1009

THM DURANGO 4037 (SOD)
 CRR D03 CASSIE 206
 CH ENUFF PROPHET 2913
 WRB MADALYNNE 10M 3804

HH ADVANCE 4089P ET
CH MS STARLA 4089 7050
 L STAR DOMINETTE 552 R304

HH ADVANCE 0024K (SOD)
 HH MS ADV 7008G 1ET
 CJH L1 DOMINO 552 (SOD)
 L STAR GOLDIE N164

CH	CED	BW	WW	YW	MILK	M&G	CW	REA	MARB	\$BMI	\$BII	\$CHB
	+3.0	+3.0	+53	+83	+18	+44	+64	+4.7	-.13	+226	+273	+99

5222 is a striking female as you evaluate her profile. She is upheaded with presence. She is really impressive when she is on the move with an authoritative stride off both ends. She is level topped and hipped and has plenty of length.

• PE 11/20/19 to 4/7/20 to CJC DM FPH 8Y Bill 540 ET. Confirmed safe in calf.

51 GCC U33 Miss Easy Money ET

3/12/16 • cow: P43718792 • TATTOO: LE D120 • Polled

BR CURRENCY 8144 ET
PERKS 0003 EASY MONEY 4003 (CHB)
 PR 144U RAMONA 0003 ET

DM BR SOONER (CHB)
 BR GABRIELLE 5082
 TH 75J 243R BAILOUT 144U ET (SOD,CHB)
 PR 279R RAMONA 7024 ET

KCF BENNETT 3008 M326 (SOD)
SHF LADY M326 U33 ET
 SHF GOVERNESS 236G L37

RRH MR FELT 3008 (CHB,SOD)
 KCF MISS 459 F284
 MM RSM STOCKMASTER 512 (SOD)
 SHF INTERSTATE D03 G80

CH	CED	BW	WW	YW	MILK	M&G	CW	REA	MARB	\$BMI	\$BII	\$CHB
	+1.9	+3.0	+57	+94	+19	+47	+76	+5.7	+20	+328	+404	+122

Bred in the Grubbs Cattle Company program, D120 is sired by Easy Money, the Perks Ranch herd sire that has really been adding look and power to his calves, and D120 is no exception. On the dam side of D120's pedigree, you will find the Upstream Ranch, Ned and Jan Ward and Grubbs donor U33. U33 has 139 progeny on record, with 58 of them ratioing 103.7 for marbling score. You can tie into some solid, dependable genetics with this one. Daughter sells as Lot 52.

Top 3% CHB. Top 10% CW, REA and Marbling. Top 15% YW

• LOT 51A: Bull calf born 9/10/20 sired by CH Spot On 860 ET.

52 CH Ms Easy Girl 838

4/15/18 • cow: 43923786 • TATTOO: BE 838 • Horned

CRR 109 ATHENS 326
UPS ATHENS 555
 UPS MISS DOMINO 7954 (DOD)

CRR 719 CATAPULT 109 (SOD)
 CRR T31 JULIA 023 (DOD)
 JBN L1 DOMINO 508
 UPS MISS DOMINO 5868

PERKS 0003 EASY MONEY 4003 (CHB)
GCC U33 MISS EASY MONEY ET
 SHF LADY M326 U33 ET

BR CURRENCY 8144 ET
 PR 144U RAMONA 0003 ET
 KCF BENNETT 3008 M326 (SOD)
 SHF GOVERNESS 236G L37

CH	CED	BW	WW	YW	MILK	M&G	CW	REA	MARB	\$BMI	\$BII	\$CHB
	-0.9	+3.5	+46	+83	+25	+48	+68	+4.2	+0.7	+292	+350	+116

Cut right in the mold of her mother, who sells as Lot 51, 838 offers a unique package of dependable genetics combined with look and carcass traits.

Top 10% CHB.

• LOT 52A: Heifer calf born 9/8/20 sired by CH Spot On 860 ET.

53 CH MS 646 Taylor 7213 ET

2/10/17 • cow: P43832913 • TATTOO: BE 7213 • Polled

REMITALL EMBRACER 8E (SOD)
REMITALL ONLINE 122L (CHB,SOD)
 REMITALL CATALINA 24H

REMITALL ACME 10A (SOD)
 PLAIN LAKE BELLE 20X 117P 5B
 MM RSM STOCKMASTER 512 (SOD)
 REMITALL CATALINA 139C

BR MOLER ET
DM BR TERRI 646 ET
 DM L1 DOMINETTE 901

REMITALL ONLINE 122L (CHB,SOD)
 DM L1 DOMINETTE 820
 HH ADVANCE 688F 1ET
 DM L1 DOMINETTE P640

CH	CED	BW	WW	YW	MILK	M&G	CW	REA	MARB	\$BMI	\$BII	\$CHB
	+1.3	+3.8	+56	+91	+20	+48	+74	+4.0	+1.2	+134	+196	+119

For many years in the Hereford breed, the Online daughters have proven to be top of the line in consistent production. They are just flat awesome cows that are problem free. Here is your chance to add a young, double bred Online daughter to your herd. Top 4% CHB. Top 10% CW.

• PE 11/20/19 to 4/7/20 to CJC DM FPH 8Y Bill 540 ET. Confirmed safe in calf.

54 CH MS 952 Claire 4054

10/4/14 • cow: 43576813 • TATTOO: BE 4054 • Horned

CRR ABOUT TIME 743 (SOD)
H H PERFECT TIMING 0150 ET
 HH MISS ADVANCE 6041S ET

THM DURANGO 4037 (SOD)
 CRR D03 CASSIE 206
 HH ADVANCE 3196N (SOD)
 HH MISS ADVANCE 2111 M

BR LANSING 3060
DM 646 CLAIRE 952 ET
 DM BR TERRI 646 ET

BR MSU LANSING 68J
 BR L1 DOMINETTE 7022 (DOD)
 BR MOLER ET
 DM L1 DOMINETTE 901

CH	CED	BW	WW	YW	MILK	M&G	CW	REA	MARB	\$BMI	\$BII	\$CHB
	+3.9	+1.7	+49	+70	+17	+42	+68	+4.4	-.07	+308	+361	+99

Perfect Timing daughters have been solid performers for quite some time now, including the dam of Lot 1 in this sale. Moderate and easy keeping.

• PE 11/20/19 to 4/7/20 to CJC DM FPH 8Y Bill 540 ET. Confirmed safe in calf.

55 BH Harland 134 435 B

2/27/14 • cow: 43485361 • TATTOO: BE 435 • Horned

CJH HARLAND 408 (SOD)
D 408 MR HARLAND 410 134X ET
 MCR 552 GOLD DOMINET 410 ET

HH ADVANCE 9005J
 CJH L1 DOMINETTE 0064
 CJH L1 DOMINO 552 (SOD)
 C MS GOLD RUSH 97030

BR DM CHANNING ET (SOD)
MCR CHANNINGS HELEN 634
 JV HELEN 804

REMITALL ONLINE 122L (CHB,SOD)
 DM L1 DOMINETTE 820
 CL 1 DOMINO 592E
 JV HELEN 166

CH	CED	BW	WW	YW	MILK	M&G	CW	REA	MARB	\$BMI	\$BII	\$CHB
	+4.2	+3.1	+51	+78	+19	+44	+64	+2.7	-.01	+228	+283	+98

Here is a pedigree packed with some foundation genetics, including Harland, Channing and 592E. A solid cow built on a solid foundation.

• LOT 55A: Heifer calf born 9/2/20 sired by CJC DM FPH 8Y Bill 540 ET.

FALL YEARLING HEIFERS

**LOTS 56-59:
FALL YEARLING
OPEN HEIFERS**



GCC LADYSPORT TRUST ME ET

Donor dam of Lots 56A & 56B...sells as Lot 17

56a 6MC 4013 *Ladyport* 953 ET
9/12/19 • cow: P44155608 • TATTOO: LE 953 • Polled

EFBEEF TFL U208 TESTED X651 ET (SOD)
INNISFAIL WHR X651/723 4013 ET (CHB)
INNISFAIL P230 T723

EFBEEF FOREMOST U208 (SOD)
EFBEEF P606 MABEL R415
EF F745 FRANK P230
INNISFAIL 235 R501 ET (DOD)

NJW 73S M326 TRUST 100W ET (SOD,CHB)
GCC LADYSPORT TRUST ME ET
NJW BW LADYSPORT DEW 78P ET

KCF BENNETT 3008 M326 (SOD)
NJW P606 72N DAYDREAM 73S
RU 20X BOULDER 57G (SOD)
SADDLE VLY LADYSPORT 120

Six	CED	BW	WW	YW	MILK	M&G	CW	REA	MARB	\$BMI	\$BII	\$CHB
	+1.3	+3.5	+68	+112	+27	+61	+81	+55	+38	+399	+501	+129

Top 2% YW and CHB. Top 3% WW and Marb. Top 5% CW. Top 10% M&G and BII. Top 15% REA and BMI.

- Sells open.

56b 6MC 4013 *Ladyport* 952 ET
9/10/19 • cow: P44155607 • TATTOO: LE 952 • Polled

EFBEEF TFL U208 TESTED X651 ET (SOD)
INNISFAIL WHR X651/723 4013 ET (CHB)
INNISFAIL P230 T723

EFBEEF FOREMOST U208 (SOD)
EFBEEF P606 MABEL R415
EF F745 FRANK P230
INNISFAIL 235 R501 ET (DOD)

NJW 73S M326 TRUST 100W ET (SOD,CHB)
GCC LADYSPORT TRUST ME ET
NJW BW LADYSPORT DEW 78P ET

KCF BENNETT 3008 M326 (SOD)
NJW P606 72N DAYDREAM 73S
RU 20X BOULDER 57G (SOD)
SADDLE VLY LADYSPORT 120

Six	CED	BW	WW	YW	MILK	M&G	CW	REA	MARB	\$BMI	\$BII	\$CHB
	+1.3	+3.5	+68	+112	+27	+61	+81	+55	+38	+399	+501	+129

Top 2% YW and CHB. Top 3% WW and Marb. Top 5% CW. Top 10% M&G and BII. Top 15% REA and BMI.

- Sells open.

GCC Ladysport Trust Me ET (B30) was our pick at the 2015 Cowtown Classic in Fort Worth from Grubbs Cattle Co. She is a direct daughter of NJW BW Ladysport Dew 78P ET, the \$90,000 donor who has 122 progeny on record and has been one of the most solid producers in the breed, including TwentyTwelve and Cowboss. B30 produced Lots 1A and 1B in the first Exclusive Sale, selected by Gary and Kathy Buchholz, GKB Ranch, Waxahachie, TX. These Innisfail 4013 daughters are stout and very broody looking with a huge, deep rib and lots of capacity. Dam sells as Lot 17.



FALL YEARLING HEIFERS



6MC ROCKIN 561 MELISSA 031

Maternal sister to Lots 58A & 58B...sells as Lot 1

58a 6MC ROCKIN 9279 *Melissa* 962 ET

9/29/19 • cow: P44155618 • TATTOO: LE 962 • Polled

GO EXCEL L18 (SOD)
ECR L18 EXTRA DEEP 9279 (SOD,CHB)
OXH CHRISTI 0028

DD EXCEL DESIGN 40 (SOD)
GO MS 124 ADVANCE 7005
CL 1 DOMINO 5131E (SOD,CHB)
OXH LOLA 8328

H H PERFECT TIMING 0150 ET
H GM 249 MELISSA MAY 4159
H KH DD MELISSA MAY 249 ET

CRR ABOUT TIME 743 (SOD)
HH MISS ADVANCE 6041S ET
AH JDH CRACKER JACK 26U ET (SOD)
GHC MISS JADE 79S

Six	CED	BW	WW	YW	MILK	M&G	CW	REA	MARB	\$BMI	\$BII	\$CHB
	+3.0	+2.7	+53	+75	+25	+52	+77	+56	-02	+400	+463	+111

Top 10% CW. Top 15% REA.
• Sells open.

58b 6MC 9279 *Melissa* 957 ET

9/24/19 • cow: P44155612 • TATTOO: LE 957 • Polled

GO EXCEL L18 (SOD)
ECR L18 EXTRA DEEP 9279 (SOD,CHB)
OXH CHRISTI 0028

DD EXCEL DESIGN 40 (SOD)
GO MS 124 ADVANCE 7005
CL 1 DOMINO 5131E (SOD,CHB)
OXH LOLA 8328

H H PERFECT TIMING 0150 ET
H GM 249 MELISSA MAY 4159
H KH DD MELISSA MAY 249 ET

CRR ABOUT TIME 743 (SOD)
HH MISS ADVANCE 6041S ET
AH JDH CRACKER JACK 26U ET (SOD)
GHC MISS JADE 79S

Six	CED	BW	WW	YW	MILK	M&G	CW	REA	MARB	\$BMI	\$BII	\$CHB
	+3.0	+2.7	+53	+75	+25	+52	+77	+56	-02	+400	+463	+111

Top 10% CW. Top 15% REA.
• Sells open.

We are very excited to see how this mating works. Their dam, 4159, is also the dam of Lot 1 and is a stellar performer for us. She is a moderate sized cow that packs a punch with her huge body shape and perfect udder. The "Bob" daughters are very impressive around the country and should maintain the udder quality with some added growth in these two. Their donor dam sells as Lot 16.

Owned with Rockin' Shocker, Fort Worth, TX.

59 6MC 1326 *Sophisticated* 971 ET

10/6/19 • cow: Reg. Pending • TATTOO: LE 971 • Polled

STAR TCF LOCK-N-LOAD 300W ET
TFR KU ROLL THE DICE 1326
LH LANGFORD LADY 0253 ET

LAGRAND RELOAD 80P ET (SOD,CHB)
STAR TCF ADV ORALEE 173P ET
THM DURANGO 4037 (SOD)
LPG 59K INDEPENDENCE LASS 22N

REMITALL ONLINE 122L (CHB,SOD)
STAR SOPHISTICATED 256Z ET
MSU APOLLONIA 10M

REMITALL EMBRACER 8E (SOD)
REMITALL CATALINA 24H
SHF INTERSTATE 20X D03 (SOD)
APOLLONIA OF BAR B 748

Six	CED	BW	WW	YW	MILK	M&G	CW	REA	MARB	\$BMI	\$BII	\$CHB
	-1.1	+4.3	+60	+100	+25	+55	+80	+45	+03	+233	+298	+124

If you want to add some size and eye appeal, be sure to check out 971. Her dam is our featured Star Lake/Express donor 256Z, and her sire is Roll the Dice, who has produced winners all over the country, including High Roller.

Top 3% CHB. Top 10% CW. Top 15% YW.

Maternal sister sells as Lot 9.

• Sells open.



STAR SOPHISTICATED 256Z ET

Donor dam of Lot 59

SERVICE-AGE BULL

LOT 60:

FALL TWO-YEAR-OLD BULL



60 CH MR 646 *Arthur* 8253 ET

11/3/18 • BULL: P44168622 • TATTOO: BE 8253 • Polled

PYRAMID 16W 110T 9116
H FHF AUTHORITY 6026 ET
 FHF 408 RITA 21W

BR LANSING 3060
DM 646 CLAIRE 966 ET
 DM BR TERRI 646 ET

FHF M33 STARBUCK 110T ET
 FHF 51M ACHIEVA 70T
 CJH HARLAND 408 [SOD]
 FHF 45P RITA 101T
 BR MSU LANSING 68J
 BR L1 DOMINETTE 7022 [DOD]
 BR MOLER ET
 DM L1 DOMINETTE 901

CH	CED	BW	WW	YW	MILK	M&G	CW	REA	MARB	\$BMI	\$BII	\$CHB
	+0.9	+3.3	+59	+90	+23	+53	+75	+47	+0.2	+293	+360	+109

There is only one service-age bull in The Exclusive this year, and we believe we are offering one that you will be proud to turn out. This Authority son has a moderate birth weight and solid numbers for growth. His dam is a direct daughter of the original Terri donor at Barber Ranch, who was a maternal sister to Sooner.

Arthur is a stout, muscular bull that moves with a long, fluid stride, and he is ready for turn out. He is big topped with a huge middle. His calves will be sure to mash down the scales.

Top 15% CW.



H FHF AUTHORITY 6026 ET

Sire of Lot 60





*Featured
Herd Sires
Represented*



CH HIGH ROLLER 756 ET



High Roller

Ref. **T/R BPF American Classic 561CET**
3/5/15 • BULL: P43645392 [DLF,HYF,IEF] • Polled

DKF RO CASH FLOW 0245 ET (SOD)
ECR WHO MAKER 210 ET
RV GOLDEN LADY 5064

LAGRAND RELOAD 80P ET (SOD,CHB)
TFR PARIS 415 ET
CRR D03 COTTON 356

CRR ABOUT TIME 743 (SOD)
JRR MISS TOBEY 711T
K&B DOMINO 2570
RV MS GOLD DUST 3064 (DOD)
AA PRF WIDELOAD (SOD,CHB)
TSF MS KEYNOTE 729
SHF INTERSTATE 20X D03 (SOD)
CRR 651 COTTON 972

Six Mile Creek	CED	BW	WW	YW	MILK	M&G	CW	REA	MARB	\$BMI	\$BII	\$CHB
	-6.3	+5.7	+57	+94	+27	+56	+84	+7.5	-.04	+257	+313	+127

Herd sire for Six Mile Creek. Owned with T/R Cattle Company and Tyler Allan.

Ref. **CH High Roller 756 ET**
9/28/17 • BULL: P43875385 [DLF,HYF,IEF] • Polled

STAR TCF LOCK-N-LOAD 300W ET
TFR KU ROLL THE DICE 1326
LH LANGFORD LADY 0253 ET

TFR HIGH COTTON 328 ET (SOD)
CH MAGIE 8023
CH GOLDEN CAT 4016 1ET

LAGRAND RELOAD 80P ET (SOD,CHB)
STAR TCF ADV ORALEE 173P ET
THM DURANGO 4037 (SOD)
LPG 59K INDEPENDENCE LASS 22N
LAGRAND RELOAD 80P ET (SOD,CHB)
CRR D03 COTTON 356
C -S PURE GOLD 98170 (CHB,SOD)
C 501 MS DOM 93123

CH	CED	BW	WW	YW	MILK	M&G	CW	REA	MARB	\$BMI	\$BII	\$CHB
	-3.4	+5.0	+67	+107	+28	+61	+80	+6.3	-.17	+290	+350	+122

Herd sire for Curry Herefords. Owned with Blagg Herefords, Graham Blagg and Perry Show Cattle.



Ref. C Spot On 6128 ET

1/14/16 • BULL: P43672936 {DLF,HYF,IEF,MSUDF} • Polled

CRR 5280
 CRR 719 CATAPULT 109 {SOD}
 CRR 435 KELLY 178 {DOD}

C 88X NOTICE ME 1311 ET
 NJW 985 R117 RIBEYE 88X ET {SOD}
 C NOTICE ME ET

TH 122 711 VICTOR 719T {SOD}
 CRR 4037 ECLIPSE 808
 DM BR SOONER {CHB}
 CRR D03 KELLY 361

SHF RIB EYE M326 R117 {SOD}
 NJW 9126J DEW DOMINO 985 {DOD}
 C - S PURE GOLD 98170 {CHB,SOD}
 HH MISS ADVANCE 104A {DOD}

CH	CED	BW	WW	YW	MILK	M&G	CW	REA	MARB	\$BMI	\$BII	\$CHB
	-3.1	+5.4	+72	+105	+33	+69	+98	+1.01	-15	+407	+476	+137

Herd sire for Curry Herefords. Owned with Colyer Herefords, Sam Birdsall and Prairie Rose Cattle Company.

Ref. BOYD 31Z Blueprint 6153

10/4/16 • BULL: P43764491 {DLF,HYF,IEF,MSUDF,MDF} • Hom. Polled

R LEADER 6964 {CHB}
 R LEADER 6964 {CHB}
 R MISS REVOLUTION 1009 {DOD}

NJW 91H 100W RITA 31Z ET
 NJW 735 M326 TRUST 100W ET {SOD,CHB}
 REMITALL RITA 91H

HYALITE ON TARGET 936 {SOD}
 HYALITE TS LASS 310
 MSU TCF REVOLUTION 4R {SOD,CHB}
 R MISS WRANGLER 3007

KCF BENNETT 3008 M326 {SOD}
 NJW P606 72N DAYDREAM 73S
 FELTONS 517 {SOD}
 REMITALL FLORIAL RITA 102

CED	BW	WW	YW	MILK	M&G	CW	REA	MARB	\$BMI	\$BII	\$CHB
+12.1	+1.1	+57	+90	+28	+57	+71	+41	+23	+422	+506	+115

Homozygous polled AI sire.

Ref. CH Spot On 860 ET

2/9/18 • BULL: 43935267 {DLF,HYF,IEF,MSUDF} • Horned

C SPOT ON 6128 ET
 CRR 5280
 CRR 435 KELLY 178 {DOD}
 C 88X NOTICE ME 1311 ET

CH MS RAINBEAU 411
 TH 22R 16S LAMBEAU 17Y
 CH MS REBA 7016 ET

CRR 719 CATAPULT 109 {SOD}
 CRR 435 KELLY 178 {DOD}
 NJW 985 R117 RIBEYE 88X ET {SOD}
 C NOTICE ME ET

TH 121L 63N TUNDRA 16S
 TH 62N 3L KELSEY 22R
 BR MOLER ET
 CH MISS OK GOLD 0053 {DOD}

CH	CED	BW	WW	YW	MILK	M&G	CW	REA	MARB	\$BMI	\$BII	\$CHB
	-2.4	+5.0	+71	+111	+25	+60	+70	+6.7	-21	+263	+323	+111

Junior herd sire for Curry Herefords.

Ref. BOYD Power Surge 9024

1/6/19 • BULL: P44004782 {DLF,HYF,IEF,MSUDF,MDF} • Polled

BOYD 31Z BLUEPRINT 6153
 R LEADER 6964 {CHB}
 NJW 91H 100W RITA 31Z ET

TH 329 358C LANA 76E
 TH 403A 475Z PIONEER 358C ET
 FTF 7227 MS LOGIC 329A

HYALITE ON TARGET 936 {SOD}
 R MISS REVOLUTION 1009 {DOD}
 NJW 735 M326 TRUST 100W ET {SOD,CHB}
 REMITALL RITA 91H

TH 89T 755T STOCKMAN 475Z
 TH 71U 17Y RITA 403A
 KJ C&L J119 LOGIC 023R ET {SOD}
 FTF CHICK A BOOM 7227T

CED	BW	WW	YW	MILK	M&G	CW	REA	MARB	\$BMI	\$BII	\$CHB
+8.6	+2.3	+70	+119	+28	+63	+85	+6.9	+01	+347	+425	+115

Used AI.

Ref. CJC DM FPH 8Y Bill 540 ET

3/29/15 • BULL: P43631874 {DLF,HYF,IEF,MSUDF,MDC} • Polled

NJW 73S W18 HOMEGROWN 8Y ET
 SHF WONDER M326 W18 ET {CHB,SOD}
 NJW P606 72N DAYDREAM 73S

DM BR SAVANNA 714 ET
 DM BR SOONER {CHB}
 CL 1 DOMINETTE 095K

KCF BENNETT 3008 M326 {SOD}
 SHF GOVERNESS 236G L37
 PW VICTOR BOOMER P606 {SOD}
 NJW 94J DEW 72N

REMITALL ONLINE 122L {CHB,SOD}
 DM L1 DOMINETTE 901
 CL 1 DOMINO 640F
 CL 1 DOMINET 496 1ET

CH	CED	BW	WW	YW	MILK	M&G	CW	REA	MARB	\$BMI	\$BII	\$CHB
	+8.2	+2.2	+70	+114	+37	+72	+89	+7.6	+06	+396	+479	+120

Herd sire for Curry Herefords. Owned with Malone Hereford Farm.

Ref. GKB 9279 Extra Deep 200C ET

10/4/15 • BULL: 43683240 {DLF,HYF,IEF,MSUDF} • Horned

ECR L18 EXTRA DEEP 9279
 GO EXCEL L18 {SOD}
 OXH CHRISTI 0028

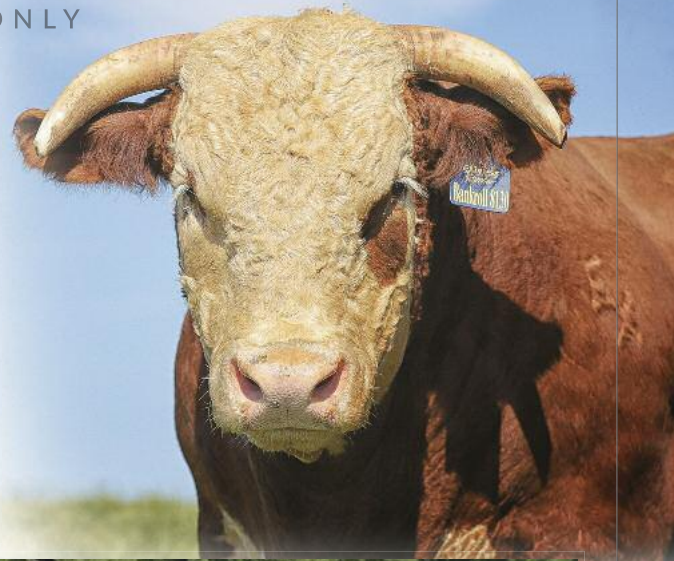
C 88X NOTICE ME 2067 ET
 NJW 985 R117 RIBEYE 88X ET {SOD}
 C NOTICE ME ET

DD EXCEL DESIGN 40 {SOD}
 GO MS 124 ADVANCE 7005
 CL 1 DOMINO 5131E {SOD,CHB}
 OXH LOLA 8328

SHF RIB EYE M326 R117 {SOD}
 NJW 9126J DEW DOMINO 985 {DOD}
 C - S PURE GOLD 98170 {CHB,SOD}
 HH MISS ADVANCE 104A {DOD}

CED	BW	WW	YW	MILK	M&G	CW	REA	MARB	\$BMI	\$BII	\$CHB
+5.4	+3.3	+58	+86	+30	+59	+78	+7.1	+08	+458	+534	+119

Herd sire for Curry Herefords. Owned with GKB Cattle Company.



Ref. **EXR Bankroll 8130 ET**
1/18/18 • BULL: 43899151 {DLF,HYF,IEF} • Horned

BAR S LHF 028 240
BR BELLE AIR 6011
BR BELLE 4082 ET

CHURCHILL SENSATION 028X (SOD)
CHURCHILL LADY 078X
GOLDEN OAK OUTCROSS 18U (SOD,CHB)
BR CSF BRIELLE 8052 ET

LSW WCC ABOUT TIME X06
EXR LEXUS 4208 ET
TCC MISS LEXUS 84 ET

CRR ABOUT TIME 743 (SOD)
WBCC WCC 69P MS RANGELAND U800
SLDK POSEIDON R09 ET
LCC TWO TIMIN 438 ET

Six Mile Creek	CED	BW	WW	YW	MILK	M&G	CW	REA	MARB	\$BMI	\$BII	\$CHB
	-0.6	+3.4	+60	+95	+41	+71	+68	+69	+15	+416	+495	+119

Six Mile Creek herd sire. Owned with Express Ranches. His AI and pasture service sell.



Ref. **ILR U201 Sooner 6112 ET**
11/10/16 • BULL: P43777997 {DLF,HYF,IEF,MSUDF,MDF} • Polled

REMITALL ONLINE 122L (CHB,SOD)
DM BR SOONER (CHB)
DM L1 DOMINETTE 901

REMITALL EMBRACER 8E (SOD)
REMITALL CATALINA 24H
HH ADVANCE 688F 1ET
DM L1 DOMINETTE P640

EFBEEF SCHU-LAR PROFICIENT N093 (SOD)
KCF MISS PROFICIENT U201
KCF MISS 774 L82

BAR JZ TRADITION 434V (SOD)
GERBER 117F DIXIE 009K
FELTONS DOMINO 774 (SOD)
KCF MISS 8020 D170 (DOD)

Six Mile Creek	CED	BW	WW	YW	MILK	M&G	CW	REA	MARB	\$BMI	\$BII	\$CHB
	+4.6	+1.1	+52	+83	+26	+52	+78	+75	+12	+429	+499	+126

Six Mile Creek herd sire. Owned with Iron Lake Ranch.

Ref. **H Bull Ringer 8459 ET**
3/2/18 • BULL: P43915089 {DLF,HYF,IEF,MDF} • Polled

BAR S LHF 028 240
BR BELLE AIR 6011
BR BELLE 4082 ET

CHURCHILL SENSATION 028X (SOD)
CHURCHILL LADY 078X
GOLDEN OAK OUTCROSS 18U (SOD,CHB)
BR CSF BRIELLE 8052 ET

CRR 719 TULO 928 (SOD)
BRL ENVY 401A
BRL CATE W4100

TH 122 71I VICTOR 719T (SOD)
CRR 352 ECLIPSE 544
R&R PRIME CUT 6378 ET (CHB)
BRL FLAME 410T

Six Mile Creek	CED	BW	WW	YW	MILK	M&G	CW	REA	MARB	\$BMI	\$BII	\$CHB
	+1.4	+4.4	+67	+107	+27	+60	+82	+36	+41	+365	+468	+126

Used AI.

Ref. **NJW 135U 10Y Hometown 27A**
2/5/13 • BULL: P43385145 {DLF,HYF,IEF,MSUDF,MDC} • Polled

SHF WONDER M326 W18 ET (CHB,SOD)
NJW 73S W18 HOMETOWN 10Y ET (SOD,CHB)
NJW P606 72N DAYDREAM 73S

KCF BENNETT 3008 M326 (SOD)
SHF GOVERNESS 236G L37
PW VICTOR BOOMER P606 (SOD)
NJW 94J DEW 72N

THM DURANGO 4037 (SOD)
NJW 4037 34S DURANGO VACA 135U (DOD)
NJW P606 80L DAYDREAM 34S ET

CS BOOMER 29F (SOD)
THM 7085 VICTRA 9036
PW VICTOR BOOMER P606 (SOD)
NJW 12E PRAIRIE 80L

Six Mile Creek	CED	BW	WW	YW	MILK	M&G	CW	REA	MARB	\$BMI	\$BII	\$CHB
	+3.4	+2.0	+61	+89	+26	+56	+68	+50	-03	+418	+490	+92

Used AI.

Thank you!

The Mark Rubes Family

The Curtis Curry & Steven Curry Families



P.O. Box 31684
Edmond, OK 73003

FIRST CLASS MAIL

TIME SENSITIVE: PLEASE DO NOT DELAY

PRE-SORTED
FIRST CLASS
U.S. POSTAGE
PAID
SLATE GROUP

FALL FEMALE PRODUCTION SALE – SUNDAY, OCTOBER 18



Volume 2

THE EXCLUSIVE

curry herefords

six mile creek hereford cattle co.

Sunday, October 18, 2020

5:00 p.m. at Six Mile Creek Ranch, El Reno, Oklahoma...

Sale location: 9900 South Chiles Road

